



Tubinox®

Superior Strength Stainless Steel Liner



Table of Contents

Applications 3

Technical Data Sheet5-6

Chimney Lengths7-9

Elbows and Tees 10-12

Supports 13-17

Chimney Kits 18-19

Rain Caps/Storm Collar20-21

Flashings.....22-23

Shields.....24-25

Adapters..... 26

Accessories27-29

Tubinox®

APPLICATIONS

The TUBINOX stainless steel liner is designed for installation in a masonry chimney:

- when the clay liner of an existing chimney is damaged
- to improve the chimney's draft
- as a substitute of the clay liner in a new masonry chimney

It can be used to vent solid, liquid or gas-fueled appliances (coal, wood, oil, etc).

A TRADITION OF EXCELLENCE

For over 50 years, Security Chimneys has been an innovator in the venting field and a market leader in North America. Instrumental in the company's growth has been an ongoing focus on product improvement and the introduction of new, innovative products. This drive for excellence has given rise to the Tubinox venting system, a line of high-quality products that deliver optimal performance.

FOR YOUR SAFETY

Time and wear can crack clay liners. Under these conditions, your liner can quickly become a nest for creosote deposits. Should this be the case with your masonry chimney, it would be wise, for safety reasons, to consider the advantages of a TUBINOX stainless steel liner.

The accumulation of creosote inside a chimney can become dangerous. As it is inflammable, creosote is the cause of chimney fires which can spread to become a real danger. The stainless steel liner impedes the adhesion of creosote.

FOR GREAT PERFORMANCE

Controlled-combustion stoves are designed accordingly to highly efficient heat transfer and combustion technologies. Their rate of performance increases when they are installed with a chimney of suitable diameter. Clay liners are often too large. Consequently, they remain too cold and do not allow gas to be completely consumed, a situation which leads to gas condensation, thus formation of creosote.



SECURITY CHIMNEYS TUBINOX® STAINLESS STEEL LINER

| Features | Benefits |
|---------------------------|--|
| Stainless steel, type 304 | <ul style="list-style-type: none">• Better corrosion resistance |
| Twist-lock System | <ul style="list-style-type: none">• Tubinox can be installed simply and easily, thanks to its unique twist-lock system. Just slip the components together and twist 1/8th of a turn. |
| Dripless Connection | <ul style="list-style-type: none">• Keeps creosote and condensation inside the liner |
| Limited lifetime Warranty | <ul style="list-style-type: none">• Peace of mind |

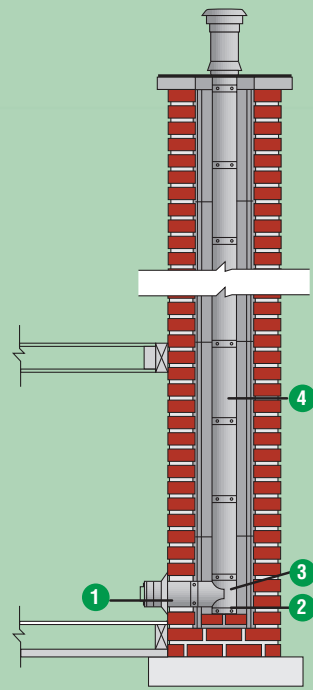
Installation

Straight Installation

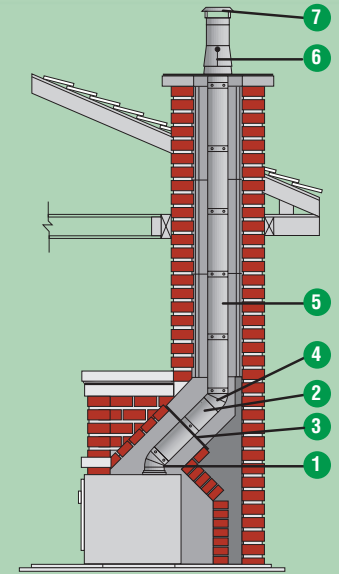
- 1 Masonry Adaptor (LMA)
- 2 Tee Cap (LTCS)
- 3 Split Base Tee (LT)
- 4 Length (L)
- 5 Flashing (LST)
- 6 Deluxe Rain Cap (LCC)

Offset Installation

- 1 Elbow (LE45/LE90)
- 2 Adjustable Length (L7A)
- 3 Interior Support (LSB)
- 4 Elbow (LE45/LE90)
- 5 Length (LL)
- 6 Support Assembly (LSA)
- 7 Regular Rain Cap (LCS)



Straight Installation



Offset Installation

Tubinox can be installed simply and easily, thanks to its unique twist-lock system. Just slip the components together and twist 1/8th of a turn.

Materials and Construction

304 stainless steel. Double-lock seam provides superior strength and prevents deformation.

Diameters

5"-8"

Listings

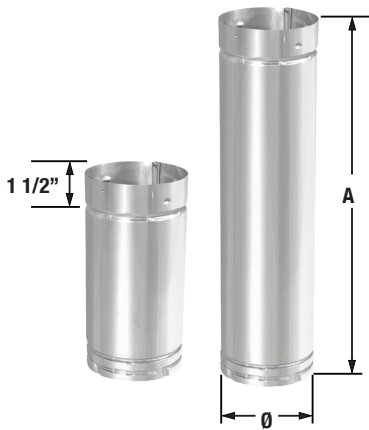
UL-1777, ULC-S635M and
ULC-S640M at 2100°F (1150°C).

Lengths

Vent Lengths

Five standard lengths of 6, 12, 24, 36 and 48 inches are available. They can be assembled easily to construct a chimney liner of the required height. Available in 5", 6", 7" and 8" I.D.

| Ø | A | Product Code | Ø | A | Product Code |
|----|----|--------------|----|----|--------------|
| 5" | 6 | 5LL6 | 7" | 6 | 7LL06 |
| 5" | 12 | 5LL12 | 7" | 12 | 7LL12 |
| 5" | 24 | 5LL24 | 7" | 24 | 7LL24 |
| 5" | 36 | 5LL36 | 7" | 36 | 7LL36 |
| 5" | 48 | 5LL48 | 7" | 48 | 7LL48 |
| 6" | 6 | 6LL6 | 8" | 6 | 8LL06 |
| 6" | 12 | 6LL12 | 8" | 12 | 8LL12 |
| 6" | 24 | 6LL24 | 8" | 24 | 8LL24 |
| 6" | 36 | 6LL36 | 8" | 32 | 8LL36 |
| 6" | 48 | 6LL48 | 8" | 48 | 8LL48 |



Adjustable Vent Lengths

Adjustable length makes it possible to adjust the liner to the required height. Telescoping from 7 to 11 inches (17.7 to 27.9 cm).

| Ø | Product Code |
|----|--------------|
| 5" | 5L7A |
| 6" | 6L7A |
| 7" | 7L7A |
| 8" | 8L7A |



Lengths

Increaser Lengths

Required to adapt the liner to larger flue diameters.

| Ø | Product Code |
|---------|--------------|
| 5" - 6" | 5LLW6 |
| 6" - 7" | 6LLW7 |
| 7" - 8" | 7LLW8 |



Reducer Lengths

Required to adapt the liner to smaller flue diameters.

| Ø | Product Code |
|---------|--------------|
| 6" - 5" | 6LLR5 |
| 7" - 6" | 7LLR6 |
| 8" - 7" | 8LLR7 |



Elbows

30° Elbow

Used to offset the liner.

| Ø | Product Code |
|----|--------------|
| 5" | 5LE30 |
| 6" | 6LE30 |
| 7" | 7LE30 |
| 8" | 8LE30 |



45° Elbow

Used to offset the liner.

| Ø | Product Code |
|----|--------------|
| 5" | 5LE45 |
| 6" | 6LE45 |
| 7" | 7LE45 |
| 8" | 8LE45 |



90° Elbow

Used to offset the liner.

| Ø | Product Code |
|----|--------------|
| 5" | 5LE90 |
| 6" | 6LE90 |
| 7" | 7LE90 |
| 8" | 8LE90 |

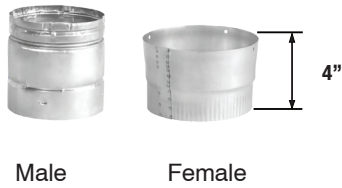


Accessories

Adaptor for Flexible Pipe

Used to connect flexible lengths to rigid parts. (Sold separately).

| Ø | Male Product Code | Female Product Code |
|----|-------------------|---------------------|
| 5" | 5LAAM | 5LAAF |
| 6" | 6LAAM | 6LAAF |
| 7" | 7LAAM | 7LAAF |
| 8" | 8LAAM | 8LAAF |



Split Base Tee

As the width of a masonry chimney is often restricted to a minimum, our split base tee features a removable snout. The snout is fastened to the other section of the tee from the inside of the flue. The tee cap is not included. (LTCS or LTC)

| Ø | Product Code | A |
|----|--------------|-----|
| 5" | 5LT | 12" |
| 6" | 6LT | 12" |
| 7" | 7LT | 12" |
| 8" | 8LT | 14" |



Regular or Twist-Lock Tee Cap

Used under the tee allowing the inspection and cleaning of the installation. Available in two versions: a regular cap screwed to the bottom of the tee. Or a twistlock cap featuring a longer flue and a handle to facilitate access.

| Ø | Regular Product Code | Twist-Lock Product Code |
|----|----------------------|-------------------------|
| 5" | 5LTCS | 5LTC |
| 6" | 6LTCS | 6LTC |
| 7" | 7LTCS | 7LTC |
| 8" | 8LTCS | 8LTC |



Masonry Adaptor

Designed for use at the indoor exit of the masonry chimney, it comes complete with decorative collar and connects with the stove pipe.

| Ø | Product Code |
|----|--------------|
| 5" | 5LMA |
| 6" | 6LMA |
| 7" | 7LMA |
| 8" | 8LMA |

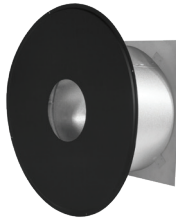


Accessories

Insulated Wall Radiation Shield

Designed to cross a combustible wall adjacent to a masonry chimney. The wall radiation shield must be adjusted to the wall of the masonry. This shield can be adjusted from 6" to 12".

| Ø | Product Code |
|----|--------------|
| 6" | 6LRSMI |
| 7" | 7LRSMI |
| 8" | 8LRSMI |



Flashing

Its ingenious design allows for thermal expansion. Available in Stainless Steel (SS)

| Ø | Product Code |
|--------------------|--------------|
| 5" | 5LST |
| 5" STAINLESS STEEL | 5LSTSS |
| 6" | 6LST |
| 6" STAINLESS STEEL | 6LSTSS |
| 7" | 7LST |
| 7" STAINLESS STEEL | 7LSTSS |
| 8" | 8LST |
| 8" STAINLESS STEEL | 8LSTSS |



Collar for Flashing

| Ø | Product Code |
|----|--------------|
| 6" | 6FCLST |
| 7" | 7FCLST |
| 8" | 8FCLST |



Support Assembly

Used to support the liner from the chimney allowing space for thermal expansion. Made of stainless steel (type 304); it includes a support collar locking around the flue, and a storm collar to ensure a watertight seal.

| Ø | Product Code |
|----|--------------|
| 5" | 5LSA |
| 6" | 6LSA |
| 7" | 7LSA |
| 8" | 8LSA |

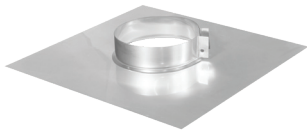


Accessories

Interior Support

Supports the liner from the inside installations with deviation and includes a support collar locking around the flue.

| Ø | Product Code |
|----|--------------|
| 5" | 5LSB |
| 6" | 6LSB |
| 7" | 7LSB |
| 8" | 8LSB |



Rain Cap

An essential finishing part, its efficient design minimizes the introduction of snow or rain without reducing the required draft.

| Ø | Regular Product Code | Deluxe Product Code |
|----|----------------------|---------------------|
| 5" | 5LCS | 5LCC |
| 6" | 6LCS | 6LCC |
| 7" | 7LCS | 7LCC |
| 8" | 8LCS | 8LCC |



Accessories

TherMix

Use to fill space between a liner and inside masonry chimney. Ready-mix formula cures into lightweight semi-hard mass that insulates the liner and dissipates the intense heat created in a chimney fire.

TherMix is now available to purchase by contacting:

Stan Slawek
RSI (Reclaim Solutions Inc.)
121 Frank Lambier Crt. Palmerston ON, Canada N0G 2P0
Email: stan.thermorock@gmail.com
Cell: 412-580-7709



Example:

A 28' chimney with a flue opening of 8.5" x 8.5" is to be lined with a 6" liner. As shown in Table 1, .30ft³ of TherMix is needed per foot of chimney height. Multiply .30 by 28 (the height of the chimney), to get 8.4ft³. Now divide 8.4 by 3.25 (the approximate volume yield per bag of TherMix), to obtain 2.6 bags/boxes of TherMix to complete the installation.

*Masonry chimneys are not uniform structures. Have extra bags/boxes available in case you need them. If there is an installation not covered by table 1, refer to the formula below:

$$\text{Packages of TherMix} = \frac{(W \times D \times H) - (CS \times H)}{1728 \text{ cu. in.}} \div 3.25$$

W = Width of masonry flue opening (in inches)
D = Depth of masonry flue opening (in inches)
H = Height of masonry flue (in inches)
CS = Cross Section areas of chimney liner (table 2)

TABLE 1: THERMIX VOLUME PER ONE FOOT OF CHIMNEY HEIGHT

| Flue Opening | Diameter of Liner | | | | | |
|---------------|-------------------|------|----------------|----------------|----------------|------|
| | 5" | 6" | 7" | 8" | 10" | 12" |
| 7.5" x 7.5" | .25 | .20 | - - | - - | - - | - - |
| 7.5" x 11.5" | .46 | .40 | (Ovalized) .38 | (Ovalized) .32 | - - | - - |
| 8.5" x 8.5" | .36 | .30 | .23 | - - | - - | - - |
| 8.5" x 11.5" | .54 | .48 | .41 | (Ovalized) .36 | (Ovalized) .33 | - - |
| 9.5" x 9.5" | .49 | .43 | .36 | .27 | - - | - - |
| 11.5" x 11.5" | .78 | .72 | .65 | .60 | .37 | - - |
| 11.5" x 16.5" | 1.18 | 1.12 | 1.05 | .96 | .77 | - - |
| 12.5" x 12.5" | .95 | .88 | .82 | .73 | .53 | - - |
| 14.5" x 14.5" | 1.30 | 1.26 | 1.20 | 1.10 | .92 | .65 |
| 14.5" x 18.5" | 1.70 | 1.66 | 1.60 | 1.50 | 1.30 | 1.04 |

TABLE 2: CROSS SECTION AREA OF LINER

| Liner Size | CS Area | Oval Liner Size | Oval Dimensions | CS Area |
|------------|-----------------------|-----------------|-----------------|----------------------|
| Round 5" | 19.62in ² | | | |
| Round 6" | 28.46in ² | Oval 6" | (4.2" x 7.2") | 24.60in ² |
| Round 7" | 38.46in ² | Oval 7" | (4.2" x 9.1") | 32.20in ² |
| Round 8" | 50.25in ² | Oval 8" | (4.2" x 10.3") | 37.20in ² |
| Round 9" | 62.50in ² | | | |
| Round 10" | 78.50in ² | Oval 10" | (4.2" x 13.3") | 49.50in ² |
| Round 12" | 113.22in ² | | | |

Accessories

ProFoil

Use as insulator for stainless steel liners in masonry chimneys. UL Listed insulation. Size is based on vent diameter.

Required to insulate stainless steel liner to meet UL 1777 when proper clearances to chimney and framing are not available. 1" clearance from SS liner to interior wall of the masonry chimney and 1" clearance from the masonry to the house framing are required in order to meet UL 1777. If you do not have either of these clearances then a ½" wrap is required. If these two clearances are available then no insulation is needed. AluFoil Tape and ProMesh required.



| Ø | FITS Ø | THICKNESS | Product Code |
|---------|-----------|-----------|--------------|
| 22"x25' | 5"-5 1/2" | 1/2" | 3-6PF22X25 |
| 24"x25' | 6" | 1/2" | 7PF24X25 |
| 29"x25' | 7" | 1/2" | 8PF29X25 |
| 48"x25' | 8"-12" | 1/2" | 9-12PF48X25 |

AluFoil Tape

Use to seal seams of ProFoil insulation. 2 mil aluminum foil tape has strength and adhesion.

| Ø | Product Code |
|-----------|--------------|
| 3" x 150' | ALFTAPE |



ProMesh

Use to protect the ProFoil during installation. 304 stainless steel mesh slides over insulated liner. Shrinks to fit liner when pulled length-wise.

| Ø | Product Code | LENGTH |
|--------------|--------------|--------|
| SM 3"-6"Ø | 3-6PMESH | 25' |
| LG 7"-9"Ø | 7-9PMESH | 25' |
| XLG 10"-12"Ø | 10-12PMESH | 25' |



This image shows a single sheet of white paper with horizontal ruling lines. The lines are evenly spaced and run across the width of the page. There are no margins, text, or other markings on the paper.



BUILD FOR THE FUTURE

Customer Service and Support:

| | |
|-------------------------------------|--------------|
| Airmate (USA) | 800.992.8368 |
| Airmate (CAN) | 888.735.5475 |
| Ameriflow | 800.252.8467 |
| Amerivent (Retail) | 800.252.8467 |
| Amerivent (Hearth & Wholesale) | 800.423.4270 |
| Amerivent (Support) | 800.748.0392 |
| AMPCO (USA) | 800.669.3269 |
| AMPCO (CAN) | 888.735.5475 |
| Duravent | 800.835.4429 |
| Hart & Cooley | 800.433.6341 |
| Hart & Cooley (Support) | 800.748.0392 |
| Heatfab (USA) | 800.772.0739 |
| Heatfab (CAN) | 800.848.2149 |
| Lima | 800.423.4270 |
| Milcor | 800.774.5240 |
| Portals Plus | 800.774.5240 |
| RPS | 800.624.8642 |
| Security Chimney (USA) | 800.361.4909 |
| Security Chimney (CAN) | 800.667.3387 |
| Selkirk (USA) Residential | 800.992.8368 |
| Selkirk (USA) Commercial | 800.848.2149 |
| Selkirk (USA) Support | 800.748.0392 |
| Selkirk (CAN) | 888.735.5475 |

Manufacturing & Distribution Centers:

| | |
|------------------|------------------------------|
| CANADA | |
| Nobel, ON | Manufacturing |
| Laval, QC | Manufacturing |
| Prescott, ON | Distribution |
| USA | |
| Grand Rapids, MI | Center of Excellence |
| Dallas, TX | Distribution |
| Englewood, OH | Distribution |
| Huntsville, AL | Manufacturing & Distribution |
| Mira Loma, CA | Distribution |
| Nampa, ID | Manufacturing & Distribution |
| Turner Falls, MA | Manufacturing & Distribution |
| Vacaville, CA | Manufacturing |
| MEXICO | |
| Ojinaga, MX | Manufacturing |
| Mexicali, MX | Manufacturing |

Corporate Headquarters:

Duravent Group
28 W. Adams, Suite 1810
Detroit, MI 48226
Tel: 800.835.4429
Email: info@duraventgroup.com
www.duraventgroup.com



duravent[™]
GROUP

BUILD FOR THE FUTURE

www.duraventgroup.com

