

DESIGN CHECKLIST

GREASE DUCT

Request for:

Budget Quote
Final BOM, CAD, Submittal & Install Drawings
Revision Required
Previous Rfq # _____

Requested by:

Our team strives to maintain standard turn-around time for quote requests at 48 hours. Urgent requests will be fulfilled pending work load and the order in which request was received.

Standard
Urgent _____
(Enter date and time [eastern])
Other _____
(Enter date)

Project Info:

Project Name & City: _____

Your Name: _____

Quick Contact Info: Phone Or Email _____

Routing: (lengths, diameters, offsets)

Specification & Scaled Mechanical Plans w/ Elevations
Hand Drawing – Center Line Dimensions, Route, Lengths, Diameters, & Elevations
DuraVent Parts List - _____

Aesthetics: Stainless Outer Wall: YES NO

Code: UL 2221(2-hr Fire Rating) YES NO

Clearance to Combustibles: Reference Table on Page 2

≥18" Single Wall Clearance	Double Wall Clearance	Mix & Match
0" Zero Clearance	1" 2" 3" 7"	

Connection:

Hood Info: _____

Fan Info: _____

Submitting: Send To layouts@securitychimneys.com - You Will Receive A Confirmation Email.



Reference Tools:

CHART 1

How to Design Build - Choices based on Design Requirements		
Customer Needs	Design Requirement	Choice(s)
Code	UL 2221 - (2-hr Fire Rating)	Zero Clearance
	Not UL 2221 (UL 1978)	Double Wall or Single Wall
Aesthetics	Speced Stainless	304/304
	No Stainless Spec	
	Stainless Aesthetics (visible/modern)	304/304
Clearance to Combustibles	No Aesthetic Requirement	Galvalume
	≥ 18"	Single Wall
	≥ 1" and ≤18"	Double Wall - UL 1978
	0"	Zero Clearance - UL 2221

Lower Costs - Options			
	Less Expensive \$	← →	More Expensive \$\$\$
Materials (1)	Galvalume	304 Stainless	316 Stainless
Product Type (1)	Single Wall	Double Wall	Zero Clearance
Diameter**	Smaller Diameter		Larger Diameter
	<i>**Increase fan speed or size</i>		

Note (1) - Can you mix & match Materials and or Product Type?

For Reference: Product Options based on Clearance to Combustibles.

TABLE 2 - GREASE DUCT UL-1978 and UL-2221 (CIX3Z only) Clearances to Combustible (Unenclosed Surrounding)
Minimum Air Space Clearances to Combustible material and Building insulation for 500°F (260°C) continuous temperature grease duct system.

Duct Model	Flue Diameter Ø (in)	Clearance to Combustible (in)	Clearance to Non-Combustible (in)
SCL	Ø5 to Ø36	18	0
CAX1	Ø5	4	0
	Ø6 to Ø11	5	0
	Ø12 & Ø16	6	0
	Ø18 & Ø22	7	0
	Ø24 & Ø28	8	0
	Ø30 & Ø34	9	0
CIX1	Ø36	10	0
	Ø5 to Ø13	2	0
	Ø14 to Ø24	3	0
	Ø26 to Ø34	4	0
CIX2 and CIX4	Ø36	5	0
	Ø5 to Ø16	1	0
	Ø18 to Ø30	2	0
CIX3Z (UL-2221)	Ø32 to Ø36	3	0
	Ø5 to Ø36	0	0

Dimensions are in inches

TIPS:

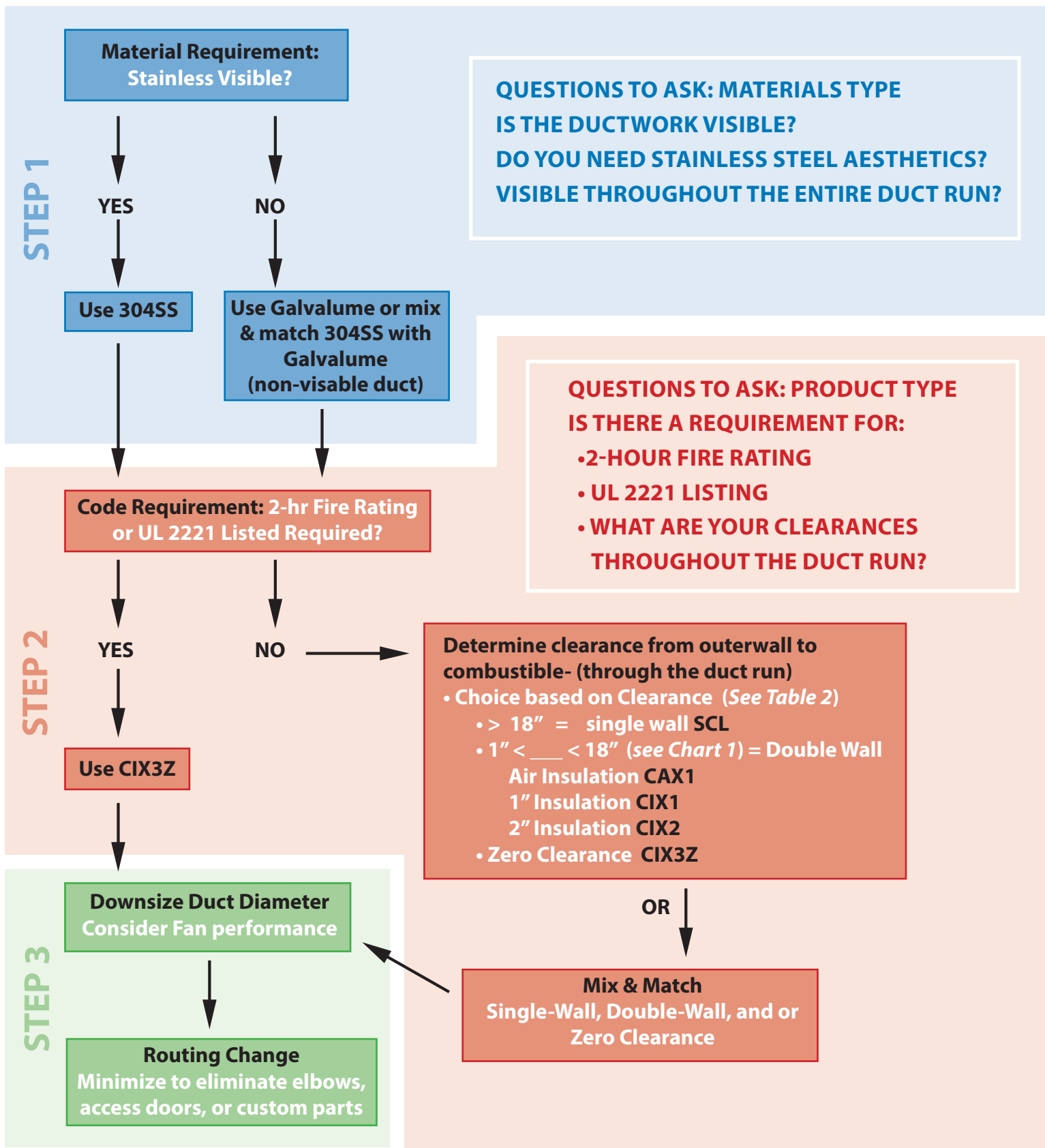
- 1-No square hood connection
- 2-Know Aesthetics – Galvalume-ok? Mix and Match?
- 3-Confirm no UL 2221 (2-hr, zero clearance)
- 4-Know your clearances throughout the run Mix and Match?
- 5-Minimize Access Doors, Elbows, & Tees
- 6-Roof – single wall (no UL 2221 or clearance issue)



Prefab, Round, UL Listed Grease Duct

Functional & Value Engineering Decisions

Engineering the Right System for your Application, at the Lowest Cost



WHAT OWNERS NEED TO KNOW: SECURITY PREFAB GREASE DUCT

Lower Install & Life-cycle Costs, Reduced Risks and Headaches, Superior Warranty

BENEFITS TO OWNER WHEN USING SECURITY vs SITE-BUILT

	Dollar Savings & Times Savings	Quality/Reliability / Durability	Notes:
REDUCE RISKS			
Probability & Consequences of Fire Event			
No Leak Welds	YES	YES	Site-built duct leaks. Prefab doesn't leak Water during cleaning, Grease during operations or Fire during a Fire Event.
No Leak Welds	YES	YES	No water leaks during cleaning means no mold from leaks. No business interruption and mold remediation expense.
Consequences of a Fire	YES	YES	No leaks means fire doesn't spread from/into ductwork (or leaked grease from site-built duct leaks)
No welding on jobsite	YES	YES	No site welding fire events & associated risks or safety preparations. No Fire Watch requirements as per local codes.
Centering Sleeve	YES	YES	Additional leak barrier
No pooling of grease			No pooling of grease in corners or behind site-built welds.
To Project Schedule			
Outer Wall vs. Insulation	YES		Reduced Inspections & AHJ involvement
Code Compliance & Project schedule	YES		Code Compliant Design & Materials. No jobsite "shortcuts"
LIFE-CYCLE SAVINGS			
Easier to Clean, Maintain, Inspect			
Stainless Steel Inner Wall	YES	YES	Reduced grease build up from porosity of site-built carbon steel
Round Design - easier to clean	YES		Right solution for IKECA approved contractors. Round vs. rectangle & associated corners where grease builds up.
No-tool Access Door	YES	YES	Savings during maintenance & inspection
No-tool Tee Cap	YES	YES	Savings during maintenance & inspection
Incline Access Pane Centering Sleeve	YES	YES	Savings during maintenance & inspection
Energy Savings			
Round Design - improved airflow	YES		Save energy, a green solution
Survive a Fire Event			
Round Design	YES	YES	Round design can survive a Fire Event
Internal Spacers	YES	YES	Internal spacers provide rigidity, survive a Fire Event
SUPERIOR MATERIALS			
Outer wall aesthetics			Outer wall aesthetics superior to fire wrap insulation... even before the insulation rips
Broad product line	YES	YES	Voice of Customer driven options. Variable lengths, transitions, adapters
WARRANTY			
Limited Lifetime			Vs. Site-built warranty of 1-year or less
INSTALLATION SIMPLICITY & SAVINGS			
Centering "Alignment" Sleeve			Awesome innovation - Voice of Customer, one person operation
V-Band	YES	YES	Voice of Customer innovation
Access Door Gasket Factory Applied	YES	YES	Another savings ... one less step for the installer
More Space Between Outers	YES	YES	Voice of Customer innovation - space for real world contractor h&s
Quicker install - "Plug-N-Play"	YES	YES	Less time on jobsite. After hours installation for rehab projects. No need to shut down
No Welding	YES	YES	No site welding & additional safety requirements
No insulation exposed	YES	YES	No damage to insulation during installation or maintenance
Reduced Inspections	YES	YES	No Fire Wrap inspections required
Captured Nut & Bolt	YES	YES	Voice of Customer innovation
Specialised parts	YES	YES	Makes installation easier
Less Slope Requirement	YES		Code driven space savings
No "fire monitoring" on jobsite	YES	YES	Site-welded duct requires fire prevention, active monitoring & additional manpower
Smaller footprint - No Fire rated Chase required	YES	YES	No fire rated chase saves space and cost

CENTERING SLEEVE: DURABILITY
Protects sealant from degradation & loss during cleaning.

NO TOOL ACCESS TEE CAP
Labor savings during maintenance. Easy and toolless inspection.

NO TOOL ACCESS DOOR
Labor savings during install, maintenance and inspection.

