

# WHAT OWNERS NEED TO KNOW: KITCHEN EXHAUST DUCT

## WHY SECURITY CHIMNEY PREFAB GREASE DUCT?

Security Chimney's Prefab Grease Duct provides benefits that help Owners reduce Expense and Risk. These benefits lower install and lifecycle costs, reduce risks and ensure less long-term headaches. They also reduce the chances for problems and conflicts between other stakeholders including contractors, AHJ's and engineers working on your project.

## WHY SECURITY CHIMNEY PREFAB GREASE DUCT: REDUCED RISK ... LOWEST COST

- Reduced Risks
- Lower Costs – Install & Lifecycle Expenses
- Superior Warranty
- Design, Application and Training Support

## WHAT ARE THE BENEFITS: WHAT IF...

- **What if you could reduce your risks of leaks during cleaning, operations and a possible fire...** The Security Chimney prefab solution is your zero-leak option. Zero-leaks during cleaning ensures water damage during duct cleaning and subsequent mold aren't a problem. Grease leaks during operations and fire escaping the duct are not an issue. Safety, IAQ and cleanliness are benefits of Security Chimney's Zero-leak Grease Duct.
- **What if you could keep the job on schedule without delays and conflicts...** Zero leaks and code compliant design support means your job goes smoothly, passes inspection without delays and conflicts and keeps the overall project on-schedule. Contractors, AHJ's and Engineers have one less source of concern.
- **What if you could lower installation costs ...** a long list of Voice of Customer driven features ensures the system is installed quickly and correctly leading to lower costs, higher quality and durability. Finding good employees will not get easier. A prefab, Plug-N-Play solution, ensures you save time on the jobsite and reduce costs using less skilled, less expensive and more available manpower.
- **What if you could reduce Life-cycle Expenses ...** stainless steel inner wall, round design, centering sleeve, no-tool tee cap and access panels are just some of the features that improve energy efficiency, quality and ease of maintenance, and durability. Additionally, there is a limited lifetime warranty.



## KITCHEN APPLICATIONS WHERE FIRE CONSEQUENCES ARE HIGH: WHERE TO USE SECURITY CHIMNEYS PREFAB DUCT

- 1) **Kitchen Proximity to Occupancy** – Restaurants on First Floor below occupancy, Education, Hotels, Hospitals, Assisted Living, Childcare
- 2) **Revenue Generating/Business Disruption** – Supermarket, Restaurants, Convenience Stores, Commercial/Industrial/Mission Critical Food Courts/Cafeterias
- 3) **Financial Risks** – Kitchen adjacent to “other” Retail, Occupancy
- 4) **Large Projects** – Stadium/Convention Center/Arena/Event Center/Casinos, Cultural/Museum, Historic Buildings & Districts, Music Clubs

### DESIGN TIP

Ensure site-built access doors are actually installed. Specifically call out the requirement for drawings and inspections of access doors so no jobsite shortcuts take place that compromise the safety of a Grease Duct system over its lifecycle.

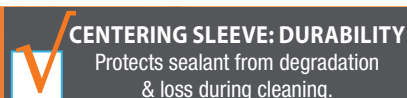
# WHAT OWNERS NEED TO KNOW: SECURITY CHIMNEY PREFAB GREASE DUCT



Lower Install & Life-cycle Costs, Reduced Risks and Headaches, Superior Warranty

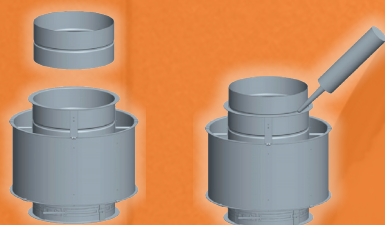
## BENEFITS TO OWNER WHEN USING SECURITY CHIMNEY vs SITE-BUILT

	Dollar Savings & Times Savings	Quality/Reliability / Durability	Notes:
<b>REDUCE RISKS</b>			
<b>Probability &amp; Consequences of Fire Event</b>			
No Leak Welds	<b>YES</b>	<b>YES</b>	Site-built duct leaks. Prefab doesn't leak Water during cleaning, Grease during operations or Fire during a Fire Event.
No Leak Welds	<b>YES</b>	<b>YES</b>	No water leaks during cleaning means no mold from leaks. No business interruption and mold remediation expense.
Consequences of a Fire	<b>YES</b>	<b>YES</b>	No leaks means fire doesn't spread from/into ductwork (or leaked grease from site-built duct leaks)
No welding on jobsite	<b>YES</b>	<b>YES</b>	No site welding fire events & associated risks or safety preparations. No Fire Watch requirements as per local codes.
Centering Sleeve	<b>YES</b>	<b>YES</b>	Additional leak barrier
No pooling of grease			No pooling of grease in corners or behind site-built welds.
<b>To Project Schedule</b>			
Outer Wall vs. Insulation	<b>YES</b>		Reduced Inspections & AHJ involvement
Code Compliance & Project schedule	<b>YES</b>		Code Compliant Design & Materials. No jobsite "shortcuts"
<b>LIFE-CYCLE SAVINGS</b>			
<b>Easier to Clean, Maintain, Inspect</b>			
Stainless Steel Inner Wall	<b>YES</b>	<b>YES</b>	Reduced grease build up from porosity of site-built carbon steel
Round Design - easier to clean	<b>YES</b>		Right solution for IKECA approved contractors. Round vs. rectangle & associated corners where grease builds up.
No-tool Access Door	<b>YES</b>	<b>YES</b>	Savings during maintenance & inspection
No-tool Tee Cap	<b>YES</b>	<b>YES</b>	Savings during maintenance & inspection
Incline Access Pane Centering Sleeve	<b>YES</b>	<b>YES</b>	Savings during maintenance & inspection
<b>Energy Savings</b>			
Round Design - improved airflow	<b>YES</b>		Save energy, a green solution
<b>Survive a Fire Event</b>			
Round Design	<b>YES</b>	<b>YES</b>	Round design can survive a Fire Event
Internal Spacers	<b>YES</b>	<b>YES</b>	Internal spacers provide rigidity, survive a Fire Event
<b>SUPERIOR MATERIALS</b>			
Outer wall aesthetics			Outer wall aesthetics superior to fire wrap insulation... even before the insulation rips
Broad product line	<b>YES</b>	<b>YES</b>	Voice of Customer driven options. Variable lengths, transitions, adapters
<b>WARRANTY</b>			
Limited Lifetime			Vs. Site-built warranty of 1-year or less
<b>INSTALLATION SIMPLICITY &amp; SAVINGS</b>			
Centering "Alignment" Sleeve			Awesome innovation - Voice of Customer, one person operation
V-Band	<b>YES</b>	<b>YES</b>	Voice of Customer innovation
Access Door Gasket Factory Applied	<b>YES</b>	<b>YES</b>	Another savings ... one less step for the installer
More Space Between Outers	<b>YES</b>	<b>YES</b>	Voice of Customer innovation - space for real world contractor h&s
Quicker install - "Plug-N-Play"	<b>YES</b>	<b>YES</b>	Less time on jobsite. After hours installation for rehab projects. No need to shut down
No Welding	<b>YES</b>	<b>YES</b>	No site welding & additional safety requirements
No insulation exposed	<b>YES</b>	<b>YES</b>	No damage to insulation during installation or maintenance
Reduced Inspections	<b>YES</b>	<b>YES</b>	No Fire Wrap inspections required
Captured Nut & Bolt	<b>YES</b>	<b>YES</b>	Voice of Customer innovation
Specialised parts	<b>YES</b>	<b>YES</b>	Makes installation easier
Less Slope Requirement	<b>YES</b>		Code driven space savings
No "fire monitoring" on jobsite	<b>YES</b>	<b>YES</b>	Site-welded duct requires fire prevention, active monitoring & additional manpower
Smaller footprint - No Fire rated Chase required	<b>YES</b>	<b>YES</b>	No fire rated chase saves space and cost



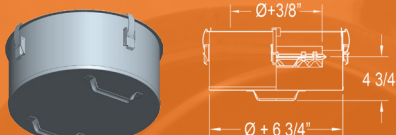
### CENTERING SLEEVE: DURABILITY

Protects sealant from degradation & loss during cleaning.



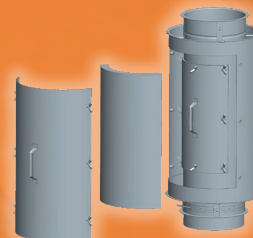
### NO TOOL ACCESS TEE CAP

Labor savings during maintenance. Easy and toolless inspection.



### NO TOOL ACCESS DOOR

Labor savings during install, maintenance and inspection.



For additional information or questions, contact [jdahlheimer@duravent.com](mailto:jdahlheimer@duravent.com) or 330-510-0052

(3/2020) OGDCIX