



Secure Seal®

Single-Wall, Double-Wall and Double-Wall Insulated Special GasVent



Secure Seal® SS, SSD, SSID, & Flex

QUALITY AND DEPENDABILITY

The Secure Seal flue is manufactured from stainless steel designed for extreme resistance to chloride ion pitting, crevice corrosion and stress corrosion cracking, as well as general corrosion in oxidizing and moderately reducing environments. 29-4C is the standard choice, but also available in 316L, for withstanding the harmful effects of corrosive condensates created by partially or fully condensing high-efficiency natural gas and propane-fired heating appliances.

The Canadian Gas Research Institute found that test results proved 29-4C and 316L to be one of the two “most corrosion-resistant alloys of 20 candidate stainless steels evaluated for resistance to chloride-induced corrosion in condensing and partially condensing gas-fired appliances.”

STRINGENT STANDARDS FOR QUALITY ASSURANCE

To guarantee a perfect fit every time and to avoid built-in stress points or weak areas, tube ends are formed under stringent guidelines and held to exacting standards.

The casing (outer tube on Secure Seal SSD/SSID) is manufactured from type 441 stainless steel to provide long-lasting performance and stability when exposed to the outdoors.

The air space between the flue and casing is 1” on SSD and 2” insulated on SSID, providing close clearances to combustibles, reasonable outside dimensions and an additional heat shield or margin of safety where needed.

BUILT TO LAST

Secure Seal features a smooth weld seam inside and out, which is completely shielded during the welding process. Contamination or molecular changes in the weld seam are avoided and no fillers are used in the welding process.

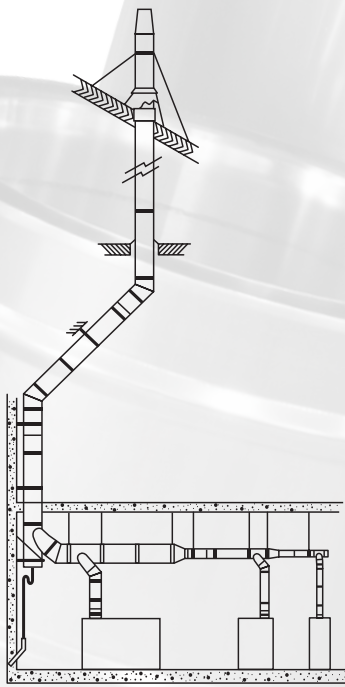
The Secure Seal double-wall system is fully interchangeable with our Secure Seal single-wall system. Both have been conformed to UL1738 and certified to ULC-S636 safety standards. When installed according to Security Chimneys’ installation instructions, Secure Seal meets all test requirements for horizontal and vertical, interior or exterior installations. SSID features the same construction as SSD, but with 2” air space filled with mineral wool insulation.



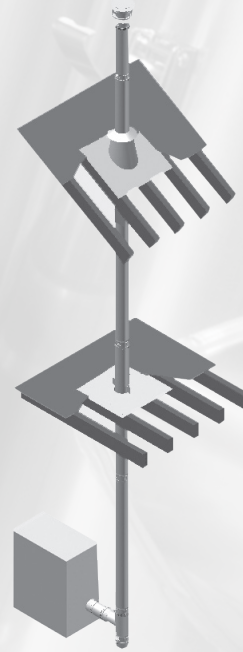
SECURITY CHIMNEYS SECURE SEAL SINGLE WALL AND DOUBLE WALL GAS VENT



Features	Benefits
Laser butt-welding	<ul style="list-style-type: none">• Reinforces strength• Prevents leakage• Increases durability and reliability
Built-in Secure Lock system	<ul style="list-style-type: none">• Provides quick and easy assembly and disassembly• Requires less time on the job site
Secure Seal sealing gaskets	<ul style="list-style-type: none">• Self-sealing, so there's no need to apply sealing material when pieces are joined together• Easier and faster installation
Standard adjustable vent length	<ul style="list-style-type: none">• Provides vertical or horizontal adjustment for easy system pitching
29-4C stainless steel standard or 316L stainless steel alternative	<ul style="list-style-type: none">• Resists the extreme corrosive environments found in condensing boilers• Assures safe and trouble-free operation
Proven track record	<ul style="list-style-type: none">• Conformed to UL1738 and certified to ULC-S636• Type L: Listed to UL-641 and ULC-S609 (SSD/SSID)• 15-year warranty
All accessories made of stainless steel	<ul style="list-style-type: none">• For durability



Secure Seal Single Wall (SS)
Vertical Installation



Secure Seal Double Wall (SSD)
Vertical Through-the-Roof Installation

Effective Length:

When assembling two parts together, the joint will overlap 2-3/8". So effective length is normal length minus 2-3/8".

Vertical Installation Requirements

1. The vent system must terminate at least 3 feet above the roof line and at least 2 feet higher than any portion of the building within 10 feet. This limitation can be removed if an engineering analysis demonstrates normal and safe operation of appliance.

2. When terminated at a height of more than 10 feet, the stack must be supported by a Guy Section.

3. The vent system must terminate with one of the Secure Seal terminations.

SECURE SEAL SINGLE WALL (SS)

Minimum Clearance to Combustibles						
Diameter	Rated operating temperature	Max flue gas temperature	Enclosed		Unenclosed	
			Horizontal	Vertical	Horizontal	Vertical
3" to 12"	194° F/90° C (Canada Only)	550° F	N/A	N/A	0"	0"
	480° F	550° F	N/A	N/A	2"	2"
14" to 24"	194° F/90° C (Canada Only)	550° F	N/A	N/A	0"	0"
	480° F	550° F	N/A	N/A	4"	4"

SECURE SEAL DOUBLE WALL (SSD/SSID)

Minimum Clearance to Combustibles						
Diameter	Rated operating temperature	Max flue gas temperature	Enclosed		Unenclosed	
			Horizontal	Vertical	Horizontal	Vertical
3" to 12"	194° F/90° C (Canada Only)	550° F	N/A	0"	0"	0"
	480° F	550° F	N/A	1"	1"	1"
14" to 24"	194° F/90° C (Canada Only)	550° F	N/A	0"	0"	0"
	480° F	550° F	N/A	1"	3"	1"
3" to 12" (L-Vent)	194° F/90° C (Canada Only)	570° F	N/A	0"	0"	0"
	480° F	570° F	N/A	2"	2"	2"
14" to 24" (L-Vent)	194° F/90° C (Canada Only)	570° F	N/A	0"	0"	0"
	480° F	570° F	N/A	2"	3"	2"

Material Thickness		
Diameter	Inner Wall Material Thickness	Outer Wall Material Thickness
3" - 9"	29-4C - .015" 316L - .015"	29-4C - .015" 316L - .015"
10" - 16"	29-4C - .020" 316L - .019"	29-4C - .020" 316L - .019"
18" - 24"	29-4C - .024" 316L - .024"	29-4C - .024" 316L - .024"

PART NUMBERS

These instructions identify major model SS-SSD-SSID parts by name and part number.

Material Code Designations	
B	Type 316 Stainless Steel
H	Type 430 Stainless Steel
K	Type 441 Stainless Steel
P	Type 439 Stainless Steel
U	Type 29-4C Stainless Steel

Example:

SSD 36" length with inside diameter 14" made of 29-4C inner flue and SS441 outer casting.

SSD	14	L36	UK
Model	Dia.	Part	Material

SS 30° elbow with inside diameter 22" made of 316L.

SS	22	E30	B
Model	Dia.	Part	Material

SSD wall support for 8" diameter

chimney made of stainless 439.

SSD	8	WSHD	P
Model	Dia.	Part	Material

Installation

Each Secure Seal vent length and component features our Secure Lock system and Viton® o-ring gasket, which insure a gas- and water-tight system. Parts are easily pushed and fastened together instantly and effortlessly.

Secure Seal can be taken apart and easily reassembled, making inspection, maintenance or rerouting of Secure Seal systems simple and straightforward.

Secure Seal provides an extensive range of components and accessories, made of stainless steel, allowing any type of installation. On top of the common components, we also offer special parts that help simplify installation, such as the 2-degree elbow and 43-degree tee (simplifying pitching on a horizontal vent) or the 18" and 36" adjustable lengths (to help maximize ease of installation). Connecting the SSD to a heater is effortless with one of the many adaptors approved by heating appliance manufacturers. Heating equipment can be operated immediately upon completing a Secure Seal installation, as no cure time or cleanup is required.

Note: If viton caulking is used at the boiler adaptor or an adjustable length, there is a cure time of 24 hours.

When venting Category I, II, III, or IV appliances or type L vented appliances, Secure Seal must be used for the entire length of the system. Do not mix pipe, fittings, or joining methods from different manufacturers. Every vent system must be planned and installed for optimum performance and safety. The venting system must be free to expand and contract and must be supported in accordance with these instructions. (Check for unrestricted vent movement through walls, ceilings, and roof penetrations). Refer to the gas appliance manufacturer's instructions to determine venting requirements and limitations with respect to installation and use of the appliance. It is the responsibility of the installer to contact local building and fire officials concerning any installation restrictions and/or inspection requirements that may apply. Permits may be required before starting and installation.

- If required by the appliance manufacturer, a Drain Tee Cap must be located as close as possible to the appliance flue outlet. Depending on the arrangement of the vent, more than one drain may be required. Unless a Drain Tee Cap is supplied with the appliance, install a Secure Seal Drain Tee Cap.
- More than one Category II, III, or IV appliance may not be connected into the same vent system unless the appliance manufacturer specifically approved such a system and the appliance is designed for multiple venting.
- Secure Seal must not come in contact with plumbing or electrical systems.
- Maintain rated clearances to combustibles over the entire length of the vent system.
- Secure Seal shall not be routed into, through, or within any vent, such as an existing masonry or factory-built chimney that is connected to another appliance.

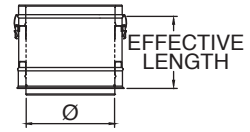
SSD & SSID Venting Lengths

SSD & SSID Lengths

Use to vent category II, III and IV appliances.

Ø	Effective Length	Product Code SSD	Product Code SSID
3" to 24"	6-5/8"	SSDØL9	SSIDØL9
3" to 24"	9-5/8"	SSDØL12	SSIDØL12
3" to 24"	15-5/8"	SSDØL18	SSIDØL18
3" to 24"	21-5/8"	SSDØL24	SSIDØL24
3" to 24"	33-5/8"	SSDØL36	SSIDØL36
5" to 9"	45-5/8"	SSDØL48	SSIDØL48

Note: SSID 3", 9" and 24" not available.

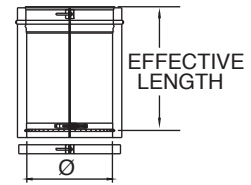


SSD & SSID Adjustable Lengths

Use to add length to straight length of Secure Seal pipe. Adds 2"–14" of length. Requires at least 4" overlap for a secure connection. Available in Custom Lengths.

Ø	Effective Length	Product Code SSD	Product Code SSID
3" to 24"	4-1/4" to 6-5/8"	SSDØAL9	SSIDØAL9
3" to 24"	4-1/4" to 15-5/8"	SSDØAL18	SSIDØAL18

Note: SSID 3", 9" and 24" not available.

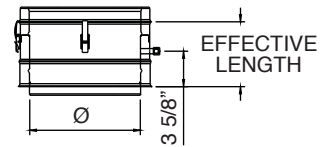
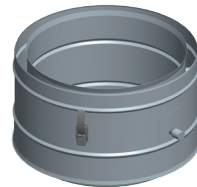


SSD & SSID Test Port Lengths

Use to test for proper appliance operation without penetrating the vent wall. Easy access to perform flue gas analysis. Test port plug included.

Ø	Effective Length	Product Code SSD	Product Code SSID
3" to 24"	6-5/8"	SSDØTPL	SSIDØTPL

Note: SSID 3", 9" and 24" not available.



SSD & SSID Drain Lengths

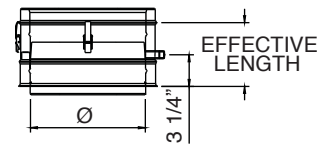
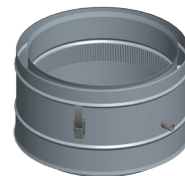
Ø	Effective Length	Product Code	Product Code SSID	K Factor
3" to 24"	6-5/8"	SSDØDL	SSIDØDL	0.25

Drain plug not included.

Drain Ø4–Ø10, 1/4 NPT, 1/2 O.D

Drain 12–Ø24, 1/2 NPT, 5/8 O.D

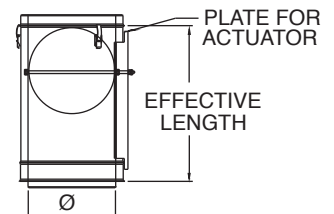
Note: SSID 3", 9" and 24" not available.



SSD & SSID Damper Lengths

Ø	Effective	Product Code	Product Code	K Factor
3" to 24"	21-5/8"	SSDØDAMP	SSIDØDAMP	0.60-9999

Note: SSID 3", 9" and 24" not available.

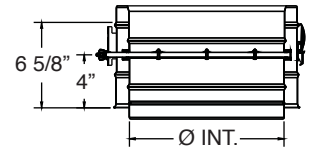
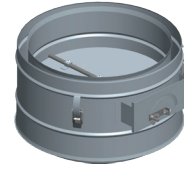


SSD & SSID Venting Lengths

SSD & SSID Damper Lengths Short

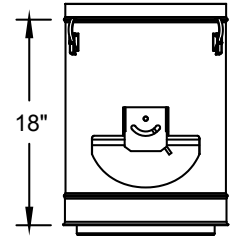
Ø	Effective	Product Code SSD	Product Code	K Factor
3" to 24"	6-5/8"	SSDØDAMPS	SSIDØDAMPS	0 to 9999

Note: SSID 3", 9" and 24" not available.



SSD K&W Fixed Blade Damper Lengths

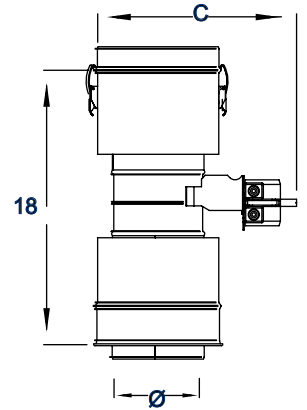
Ø	Effective	Product Code SSD
6" to 18"	18"	SSDØKWDAMP



SSD Motorized Damper Lengths

Ø	Effective	Product Code SSD
3" to 18"	18"	SSDØMOTDAMP

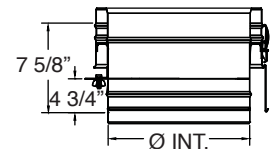
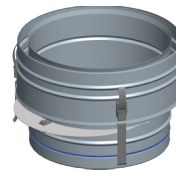
Note: SSD 5", 7", 9", 11", 13", 15", and 17" not available.



SSD & SSID Vent Flow Regulator

Ø	Effective Length	Product Code	Product Code	K Factor
3" to 24"	5-7/8"	SSDØVFR	SSIDØVFR	0 to 9999

Note: SSID 3", 9" and 24" not available.

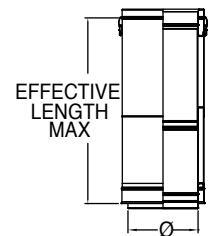
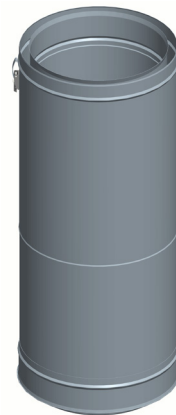


SSD Telescopic Lengths

Telescopic lengths do not require cutting to fit dimension.

Ø	Effective Length	Product Code
3" to 24"	14" to 20"	SSDØLAT20
3" to 24"	20" to 32"	SSDØLAT32

Note: SSID 3", 9" and 24" not available.

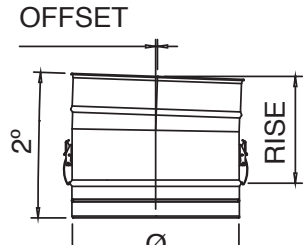


SSD & SSID Venting Elbows

SSD 2-Degree Elbow

Use to facilitate the 2° pitch required in horizontal runs. Offsets obstructions as needed. Allows for better condensate management and less back pressure.

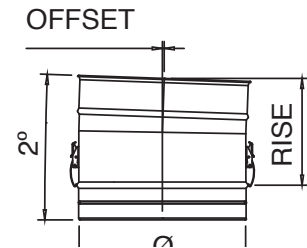
Ø	Offset	Rise	Product Code SSD	K Factor
3" to 5"	1/8"	7-3/4"	SSDØE2	.04
6" to 8"	1/8"	7-7/8"	SSDØE2	.04
9" to 12"	1/8"	8"	SSDØE2	.04
14"	1/8"	8-1/8"	SSD14E2	.03
16" to 18"	1/8"	8-1/4"	SSDØE2	.03
20" to 22"	1/8"	8-3/8"	SSDØE2	.03
24"	1/8"	8-1/2"	SSD24E2	.03



SSID 2-Degree Elbow

Use to facilitate the 2° pitch required in horizontal runs. Offsets obstructions as needed. Allows for better condensate management and less back pressure. 9" and 24" not available.

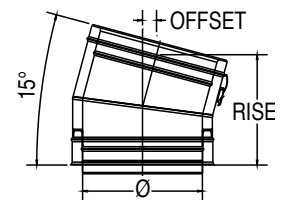
Ø	Offset	Rise	Product Code SSID	K Factor
4" to 5"	1/8"	7-3/4"	SSIDØE2	.04
6" to 8"	1/8"	7-7/8"	SSIDØE2	.04
10" to 12"	1/8"	8"	SSIDØE2	.04
14"	1/8"	8-1/8"	SSID14E2	.04
16" to 18"	1/8"	8-1/4"	SSIDØE2	.04
20" to 22"	1/8"	8-3/8"	SSIDØE2	.04



SSD 15-Degree Elbow

Offsets obstructions as needed. Allows for better condensate management and less back pressure.

Ø	Offset	Rise	Product Code SSD	K
3"	1"	8-3/4"	SSD3E15	.31
4"	1"	8-3/4"	SSD4E15	.31
5"	1"	8-3/4"	SSD5E15	.30
6"	1-1/8"	9"	SSD6E15	.30
7"	1-1/8"	9-3/8"	SSD7E15	.29
8"	1-1/4"	9-5/8"	SSD8E15	.29
9"	1-1/4"	9-7/8"	SSD9E15	.28
10"	1-1/4"	10-1/8"	SSD10E15	.28
12"	1-3/8"	10-5/8"	SSD12E15	.27
14"	1-3/8"	11-1/8"	SSD14E15	.27
16"	1-1/2"	11-5/8"	SSD16E15	.26
18"	1-1/2"	12-1/8"	SSD18E15	.26
20"	1-5/8"	12-5/8"	SSD20E15	.26
22"	1-5/8"	13-1/4"	SSD22E15	.26
24"	1-3/4"	13-3/4"	SSD24E15	.26

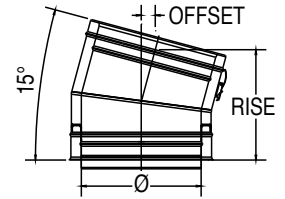


SSD & SSID Venting Elbows

SSID 15-Degree Elbow

Offsets obstructions as needed. Allows for better condensate management and less back pressure. 9" and 24" not available.

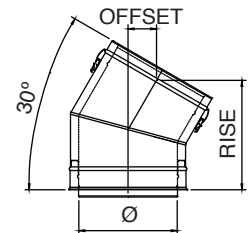
Ø	Offset	Rise	Product Code	K Factor
4"	1-1/8"	9"	SSID4E15	.31
5"	1-1/8"	9-3/8"	SSID5E15	0.3
6"	1-1/4"	9-5/8"	SSID6E15	0.3
7"	1-1/4"	9-7/8"	SSID7E15	0.29
8"	1-1/4"	10-1/8"	SSID8E15	0.29
10"	1-3/8"	10-5/8"	SSID10E15	0.28
12"	1-3/8"	11-1/8"	SSID12E15	0.27
14"	1-1/2"	11-5/8"	SSID14E15	0.27
16"	1-1/2"	12-1/8"	SSID16E15	0.26
18"	1-5/8"	12-5/8"	SSID18E15	0.26
20"	1-5/8"	13-1/4"	SSID20E15	0.26
22"	1-3/4"	13-3/4"	SSID22E15	0.26



SSD 30-Degree Elbow

Offsets obstructions as needed. Allows for better condensate management and less back pressure.

Ø	Offset	Rise	Product Code	K Factor
3"	2-3/8"	9-5/8"	SSD3E30	.65
4"	2-3/8"	9-5/8"	SSD4E30	.61
5"	2-3/8"	9-5/8"	SSD5E30	.60
6"	2-5/8"	10-1/8"	SSD6E30	.59
7"	2-3/4"	10-5/8"	SSD7E30	.58
8"	2-7/8"	11-1/8"	SSD8E30	.57
9"	3"	11-5/8"	SSD9E30	.56
10"	3-1/8"	12-1/8"	SSD10E30	.55
12"	3-3/8"	13-1/8"	SSD12E30	.54
14"	3-5/8"	14-1/8"	SSD14E30	.54
16"	3-7/8"	15-1/8"	SSD16E30	.53
18"	4-1/8"	16-1/8"	SSD18E30	.52
20"	4-1/2"	17-1/8"	SSD20E30	.52
22"	4-3/4"	18-1/8"	SSD22E30	.51
24"	5"	19-1/8"	SSD24E30	.51

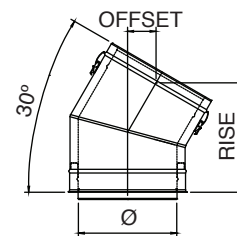


SSD & SSID Venting Elbows

SSID 30-Degree Elbow

Offsets obstructions as needed. Allows for better condensate management and less back pressure. 9" and 24" not available.

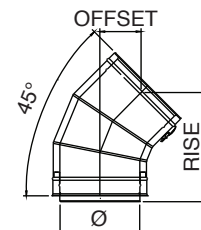
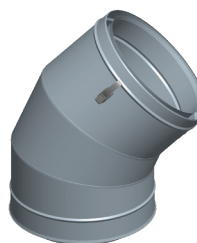
Ø	Offset	Rise	Product Code SSID	K Factor
4"	2-5/8"	10-1/8"	SSID4E30	0.61
5"	2-3/4"	10-5/8"	SSID5E30	0.60
6"	2-7/8"	11-1/8"	SSID6E30	0.59
7"	3"	11-5/8"	SSID7E30	0.58
8"	3-1/8"	12-1/8"	SSID8E30	0.57
10"	3-3/8"	13-1/8"	SSID10E30	0.55
12"	3-5/8"	14-1/8"	SSID12E30	0.54
14"	3-7/8"	15-1/8"	SSID14E30	0.54
16"	4-1/8"	16-1/8"	SSID16E30	0.53
18"	4-1/2"	17-1/8"	SSID18E30	0.52
20"	4-3/4"	18-1/8"	SSID20E30	0.52
22"	5"	19-1/8"	SSID22E30	0.51



SSD 45-Degree Elbow

Offsets obstructions as needed. Allows for better condensate management and less back pressure.

Ø	Offset	Rise	Product Code SSD	K Factor
3"	3-7/8"	10-1/8"	SSD3E45	.30
4" to 5"	3-7/8"	10-1/8"	SSDØE45	.26
6"	4-1/4"	10-7/8"	SSD6E45	.17
7"	4-1/2"	11-1/2"	SSD7E45	.16
8"	4-7/8"	12-1/4"	SSD8E45	.14
9"	5-1/8"	13"	SSD9E45	.13
10"	5-3/8"	13-5/8"	SSD10E45	.12
12"	6"	15-1/8"	SSD12E45	.11
14"	6-5/8"	16-1/2"	SSD14E45	.11
16"	7-1/8"	17-7/8"	SSD16E45	.10
18"	7-3/4"	19-3/8"	SSD18E45	.09
20"	8-3/8"	20-3/4"	SSD20E45	.08
22"	8-7/8"	22-1/8"	SSD22E45	.08
24"	9-1/2"	23-5/8"	SSD24E45	.08

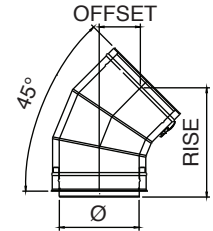


SSD & SSID Venting Elbows

SSID 45-Degree Elbow

Offsets obstructions as needed. Allows for better condensate management and less back pressure. 9" and 24" not available.

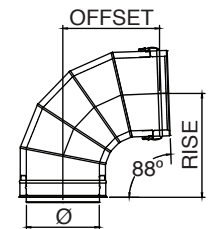
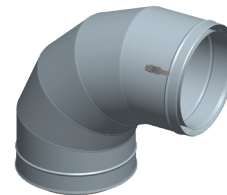
Ø	Offset	Rise	Product Code	K Factor
4"	4-1/4"	10-7/8"	SSID4E45	0.26
5"	4-1/2"	11-1/2"	SSID5E45	0.22
6"	4-7/8"	12-1/4"	SSID6E45	0.17
7"	5-1/8"	13"	SSID7E45	0.16
8"	5-3/8"	13-5/8"	SSID8E45	0.14
10"	6"	15-1/8"	SSID10E45	0.12
12"	6-5/8"	16-1/2"	SSID12E45	0.11
14"	7-1/8"	17-7/8"	SSID14E45	0.11
16"	7-3/4"	19-3/8"	SSID16E45	0.1
18"	8-3/8"	20-3/4"	SSID18E45	0.09
20"	8-7/8"	22-1/8"	SSID20E45	0.08
22"	9-1/2"	23-5/8"	SSID22E45	0.08



SSD 88-Degree Elbow

Use to transition from a vertical to a horizontal run. Stabilizes a 2° pitch towards the condensate drain for good condensate management.

Ø	Offset	Rise	Product Code SSD	K Factor
3"	8-3/8"	9-1/4"	SSD3E88	.60
4" to 5"	8-3/8"	9-1/4"	SSDØE88	.54
6"	9-1/4"	10-1/4"	SSD6E88	.42
7"	10-1/4"	11-1/4"	SSD7E88	.39
8"	11-1/4"	12-1/4"	SSD8E88	.37
9"	12-1/4"	13-1/4"	SSD9E88	.34
10"	13-1/8"	14-1/4"	SSD10E88	.32
12"	15-1/8"	16-1/4"	SSD12E88	.29
14"	17"	18-1/4"	SSD14E88	.27
16"	19"	20-1/4"	SSD16E88	.25
18"	20-7/8"	22-1/4"	SSD18E88	.24
20"	22-7/8"	24-1/4"	SSD20E88	.23
22"	24-3/4"	26-1/4"	SSD22E88	.21
24"	26-5/8"	28-1/4"	SSD24E88	.20

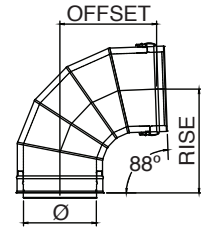
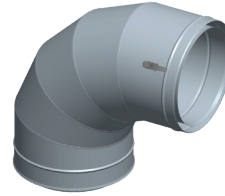


SSD & SSID Venting Elbows

SSID 88-Degree Elbow

Use to transition from a vertical to a horizontal run. Stabilizes a 2° pitch towards the condensate drain for good condensate management. 9" and 24" not available.

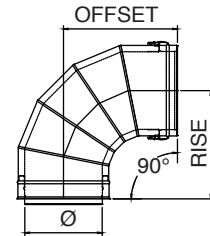
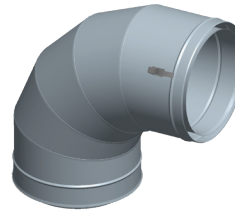
Ø	Offset	Rise	Product Code SSID	K
4" to 5"	9"	9-1/4"	SSID0E88	.54
6"	9-1/4"	10-1/4"	SSID6E88	.42
7"	10-1/4"	11-1/4"	SSID7E88	.39
8"	11-1/4"	12-1/4"	SSID8E88	.37
10"	13-1/8"	14-1/4"	SSID10E88	.32
12"	15-1/8"	16-1/4"	SSID12E88	.29
14"	17"	18-1/4"	SSID14E88	.27
16"	19"	20-1/4"	SSID16E88	.25
18"	20-7/8"	22-1/4"	SSID18E88	.24
20"	22-7/8"	24-1/4"	SSID20E88	.23
22"	24-3/4"	26-1/4"	SSID22E88	.21



SSD 90-Degree Elbow

Use to go from horizontal to vertical runs or vertical to horizontal runs. Use to turn vent 90°.

Ø	Offset	Rise	Product Code SSD	K Factor
3"	8-1/2"	9-1/8"	SSD3E90	.60
4" to 5"	8-1/2"	9-1/8"	SSD0E90	.54
6"	9-1/2"	10-1/8"	SSD6E90	.42
7"	10-1/2"	11-1/8"	SSD7E90	.39
8"	11-1/2"	12-1/8"	SSD8E90	.37
9"	12-1/2"	13-1/8"	SSD9E90	.34
10"	13-1/2"	14-1/8"	SSD10E90	.32
12"	15-1/2"	16-1/8"	SSD12E90	.29
14"	17-1/2"	18-1/8"	SSD14E90	.27
16"	19-1/2"	20-1/8"	SSD16E90	.25
18"	21-1/2"	22-1/8"	SSD18E90	.24
20"	23-1/2"	24-1/8"	SSD20E90	.23
22"	25-1/2"	26-1/8"	SSD22E90	.21
24"	27-1/2"	28-1/8"	SSD24E90	.20

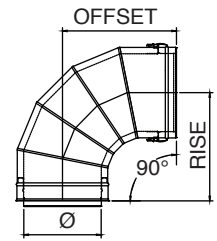
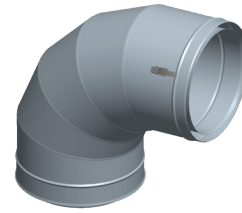


SSD & SSID Venting Elbows

SSID 90-Degree Elbow

Use to go from horizontal to vertical runs or vertical to horizontal runs. Use to turn vent 90°. 9" and 24" not available.

Ø	Offset	Rise	Product Code SSID	K Factor
4"	9-1/2"	10-1/8"	SSID4E90	0.54
5"	10-1/2"	11-1/8"	SSID5E90	0.48
6"	11-1/2"	12-1/8"	SSID6E90	0.42
7"	12-1/2"	13-1/8"	SSID7E90	0.39
8"	13-1/2"	14-1/8"	SSID8E90	0.37
10"	15-1/2"	16-1/8"	SSID10E90	0.32
12"	17-1/2"	18-1/8"	SSID12E90	0.29
14"	19-1/2"	20-1/8"	SSID14E90	0.27
16"	21-1/2"	22-1/8"	SSID16E90	0.25
18"	23-1/2"	24-1/8"	SSID18E90	0.24
20"	25-1/2"	26-1/8"	SSID20E90	0.23
22"	27-1/2"	28-1/8"	SSID22E90	0.21

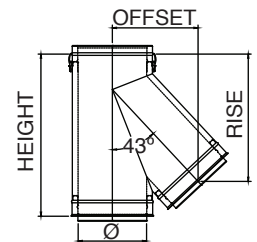


SSD & SSID Venting Tees

SSD 43-Degree Tee

Use in place of any tee for a 43° angle instead of 90°; can be used as a manifold connection to gang multiple boilers into a common vent.

Ø	Height	Offset	Rise	Product Code SSD	K Factor
3"	15-1/2"	7-5/8"	12-3/8"	SSD3T43	0.4
4"	16-1/2"	8-1/4"	13-3/8"	SSD4T43	0.4
5"	18-1/2"	8-7/8"	14-3/8"	SSD5T43	0.4
6"	19-1/2"	9-5/8"	15-3/8"	SSD6T43	0.4
7"	20-1/2"	10-1/4"	16-1/4"	SSD7T43	0.4
8"	22-1/2"	11-5/8"	18"	SSD8T43	0.4
9"	23-1/2"	12-1/4"	18-7/8"	SSD9T43	0.4
10"	25-1/2"	13"	19-3/4"	SSD10T43	0.4
12"	28-1/2"	15"	22-3/8"	SSD12T43	0.4
14"	31-1/2"	16-3/8"	24-1/4"	SSD14T43	0.4
16"	33-1/2"	18-1/2"	26-1/4"	SSD16T43	0.4
18"	38-1/4"	20-1/2"	29-3/8"	SSD18T43	0.4
20"	42-1/4"	23-7/8"	33-1/2"	SSD20T43	0.4
22"	45-1/4"	23-7/8"	33-7/8"	SSD22T43	0.4
24"	51-1/4"	27-7/8"	38-1/2"	SSD24T43	0.4

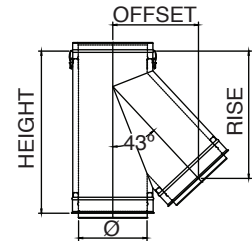


SSD & SSID Venting Tees

SSID 43-Degree Tee

Use in place of any tee for a 43° angle instead of 90°; can be used as a manifold connection to gang multiple boilers into a common vent. 9" and 24" not available.

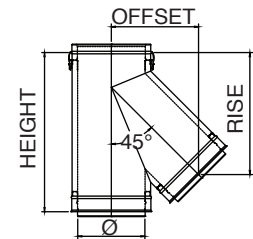
Ø	Height	Offset	Rise	Product Code SSID	K Factor
4"	19-1/2"	9-5/8"	15-3/8"	SSID4T43	0.4
5"	20-1/2"	10-1/4"	16-1/4"	SSID5T43	0.4
6"	22-1/2"	11-5/8"	18"	SSID6T43	0.4
7"	23-1/2"	12-1/4"	18-7/8"	SSID7T43	0.4
8"	25-1/2"	13"	19-3/4"	SSID8T43	0.4
10"	28-1/2"	15"	22-3/8"	SSID10T43	0.4
12"	31-1/2"	16-3/8"	24-1/4"	SSID12T43	0.4
14"	33-1/2"	18-1/2"	26-1/4"	SSID14T43	0.4
16"	38-1/4"	20-1/2"	29-3/8"	SSID16T43	0.4
18"	42-1/4"	23-7/8"	33-1/2"	SSID18T43	0.4
20"	45-1/4"	23-7/8"	33-7/8"	SSID20T43	0.4
22"	51-1/4"	27-7/8"	38-1/2"	SSID22T43	0.4



SSD 45-Degree Tee

Use in place of any tee for a 45° angle instead of 90°; can be used as a manifold connection to gang multiple boilers into a common vent.

Ø	Height	Offset	Rise	Product Code SSD	K Factor
3"	15-1/2"	7-5/8"	12-1/4"	SSD3T45	0.4
4"	16-1/2"	8-1/2"	13-1/4"	SSD4T45	0.4
5"	18-1/2"	9-1/4"	14-1/8"	SSD5T45	0.4
6"	19-1/2"	9-7/8"	15-1/8"	SSD6T45	0.4
7"	20-1/2"	10-5/8"	16"	SSD7T45	0.4
8"	22-1/2"	12"	17-5/8"	SSD8T45	0.4
9"	23-1/2"	12-3/4"	18-1/2"	SSD9T45	0.4
10"	25-1/2"	13-1/2"	19-1/2"	SSD10T45	0.4
12"	28-1/2"	15-5/8"	22"	SSD12T45	0.4
14"	31-1/2"	17"	23-7/8"	SSD14T45	0.4
16"	33-1/2"	19-1/8"	26-3/8"	SSD16T45	0.4
18"	38-1/4"	21-1/4"	28-7/8"	SSD18T45	0.4
20"	42-1/4"	24-3/4"	32-7/8"	SSD20T45	0.4
22"	45-1/4"	24-3/4"	33-1/4"	SSD22T45	0.4
24"	51-1/4"	28-7/8"	37-3/4"	SSD24T45	0.4

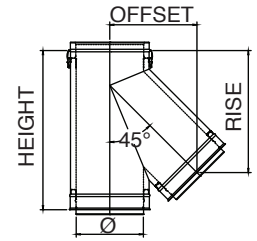


SSD & SSID Venting Tees

SSID 45-Degree Tee

Use in place of any tee for a 45° angle instead of 90°; can be used as a manifold connection to gang multiple boilers into a common vent. 9" and 24" not available.

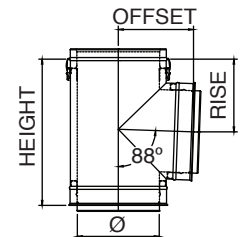
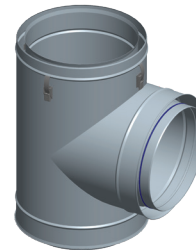
Ø	Height	Offset	Rise	Product Code SSID	K Factor
4"	19-1/2"	9-7/8"	14-1/8"	SSID4T45	0.4
5"	20-1/2"	10-5/8"	14-1/8"	SSID5T45	0.4
6"	22-1/2"	12"	15-1/8"	SSID6T45	0.4
7"	23-1/2"	12-3/4"	16"	SSID7T45	0.4
8"	25-1/2"	13-1/2"	17-5/8"	SSID8T45	0.4
10"	28-1/2"	15-5/8"	19-1/2"	SSID10T45	0.4
12"	31-1/2"	17"	22"	SSID12T45	0.4
14"	33-1/2"	19-1/8"	23-7/8"	SSID14T45	0.4
16"	38-1/4"	21-1/4"	26-3/8"	SSID16T45	0.4
18"	42-1/4"	24-3/4"	28-7/8"	SSID18T45	0.4
20"	45-1/4"	24-3/4"	32-7/8"	SSID20T45	0.4
22"	51-1/4"	28-7/8"	33-1/4"	SSID22T45	0.4



SSD 88-Degree Tee

Use for a 88° offset, or to combine connections from two or more appliances into a common vent. Can also use as a condensate management point when used in conjunction with drain fitting. All Standard Tees are completely welded.

Ø	Height	Offset	Rise	Product Code SSD	K Factor
3"	12-1/2"	7"	6-1/4"	SSD3T88	1.21
4"	13-1/2"	7"	6-5/8"	SSD4T88	1.21
5"	14-1/2"	8"	7-1/4"	SSD5T88	1.21
6"	15-1/2"	8"	7-5/8"	SSD6T88	1.21
7"	16-1/2"	9"	8-1/4"	SSD7T88	1.21
8"	17-1/2"	9"	8-5/8"	SSD8T88	1.21
9"	18-1/2"	10"	9-1/4"	SSD9T88	1.21
10"	19-1/2"	10"	9-5/8"	SSD10T88	1.21
12"	21-1/2"	11"	10-5/8"	SSD12T88	1.21
14"	23-1/2"	12"	11-5/8"	SSD14T88	1.21
16"	25-1/2"	13"	12-5/8"	SSD16T88	1.21
18"	27-1/2"	14"	13-5/8"	SSD18T88	1.21
20"	29-1/2"	15"	14-5/8"	SSD20T88	1.21
22"	31-1/2"	16"	15-5/8"	SSD22T88	1.21
24"	33-1/2"	17"	16-5/8"	SSD24T88	1.21

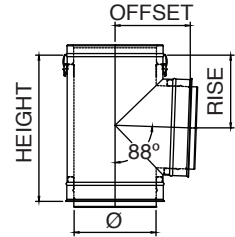


SSD & SSID Venting Tees

SSID 88-Degree Tee

Use for a 88° offset, or to combine connections from two or more appliances into a common vent. Can also use as a condensate management point when used in conjunction with drain fitting. All Standard Tees are completely welded. 9" and 24" not available.

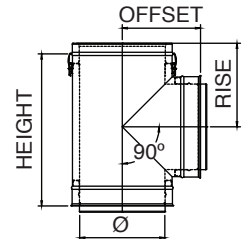
Ø	Height	Offset	Rise	Product Code SSID	K Factor
4"	15-1/2"	8"	7-5/8"	SSID4T88	1.21
5"	16-1/2"	9"	8-1/4"	SSID5T88	1.21
6"	17-1/2"	9"	8-5/8"	SSID6T88	1.21
7"	18-1/2"	10"	9-1/4"	SSID7T88	1.21
8"	19-1/2"	10"	9-5/8"	SSID8T88	1.21
10"	21-1/2"	11"	10-5/8"	SSID10T88	1.21
12"	23-1/2"	12"	11-5/8"	SSID12T88	1.21
14"	25-1/2"	13"	12-5/8"	SSID14T88	1.21
16"	27-1/2"	14"	13-5/8"	SSID16T88	1.21
18"	29-1/2"	15"	14-5/8"	SSID18T88	1.21
20"	31-1/2"	16"	15-5/8"	SSID20T88	1.21
22"	33-1/2"	17"	16-5/8"	SSID22T88	1.21



SSD 90-Degree Tee

Use for a 90° offset, or to combine connections from two or more appliances into a common vent. Can also use as a condensate management point when used in conjunction with drain fitting. All Standard Tees are completely welded.

Ø	Height	Offset	Rise	Product Code SSD	K Factor
3"	12-1/2"	7"	6-1/4"	SSD3T90	1.21
4"	13-1/2"	7"	6-1/2"	SSD4T90	1.21
5"	14-1/2"	8"	7"	SSD5T90	1.21
6"	15-1/2"	8"	7-1/2"	SSD6T90	1.21
7"	16-1/2"	9"	8"	SSD7T90	1.21
8"	17-1/2"	9"	8-1/2"	SSD8T90	1.21
9"	18-1/2"	10"	9"	SSD9T90	1.21
10"	19-1/2"	10"	9-1/2"	SSD10T90	1.21
12"	21-1/2"	11"	10-1/2"	SSD12T90	1.21
14"	23-1/2"	12"	11-1/2"	SSD14T90	1.21
16"	25-1/2"	13"	12-1/2"	SSD16T90	1.21
18"	27-1/2"	14"	13-1/2"	SSD18T90	1.21
20"	29-1/2"	15"	14-1/2"	SSD20T90	1.21
22"	31-1/2"	16"	15-1/2"	SSD22T90	1.21
24"	33-1/2"	17"	16-1/2"	SSD24T90	1.21



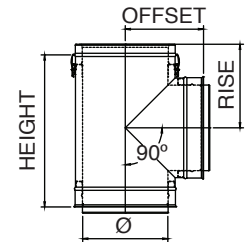
SSD & SSID Venting Tees

SSID 90-Degree Tee

Use for a 90° offset, or to combine connections from two or more appliances into a common vent. Can also use as a condensate management point when used in conjunction with drain fitting. All Standard Tees are completely welded. 9" and 24" not available.

Ø	Height	Offset	Rise	Product Code SSID	K Factor
4"	15-1/2"	8"	7-1/2"	SSID4T90	1.21
5"	16-1/2"	9"	8"	SSID5T90	1.21
6"	17-1/2"	9"	8-1/2"	SSID6T90	1.21
7"	18-1/2"	10"	9"	SSID7T90	1.21
8"	19-1/2"	10"	9-1/2"	SSID8T90	1.21
10"	21-1/2"	11"	10-1/2"	SSID10T90	1.21
12"	23-1/2"	12"	11-1/2"	SSID12T90	1.21
14"	25-1/2"	13"	12-1/2"	SSID14T90	1.21
16"	27-1/2"	14"	13-1/2"	SSID16T90	1.21
18"	29-1/2"	15"	14-1/2"	SSID18T90	1.21
20"	31-1/2"	16"	15-1/2"	SSID20T90	1.21
22"	33-1/2"	17"	16-1/2"	SSID22T90	1.21

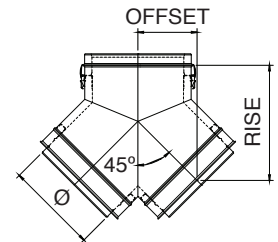
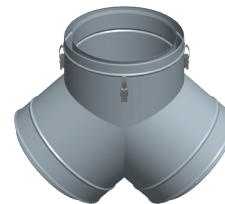
Available with smaller snout and custom height.



SSD 90-Degree Tee Y

Ø	Offset	Rise	Product Code SSD	K Factor
3"	4.5"	9-5/8"	SSD3TY90	0.6
4"	5"	10-3/8"	SSD4TY90	0.6
5" and 6"	5-5/8"	11-1/8"	SSDØTY90	0.6
7" and 8"	6-3/8"	11-3/4"	SSDØTY90	0.6
9" and 10"	7-1/8"	13-1/2"	SSDØTY90	0.6
12"	7-3/4"	14-1/4"	SSD12TY90	0.6
14"	8-1/2"	15-7/8"	SSD14TY90	0.6
16"	9-1/4"	17-5/8"	SSD16TY90	0.6
18"	9-7/8"	18-3/8"	SSD18TY90	0.6
20"	10-5/8"	21"	SSD20TY90	0.6
22"	11-3/8"	21-3/4"	SSD22TY90	0.6
24"	12"	22-1/2"	SSD24TY90	0.6

Available with smaller snout.

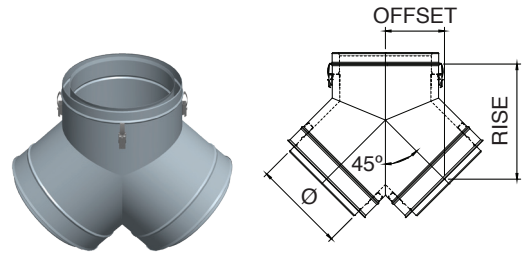


SSD & SSID Venting Tees

SSID 90-Degree Tee Y

Ø	Offset	Rise	Product Code SSID	K Factor
4"	5-5/8"	11-1/8"	SSID4TY90	0.6
5" to 6"	6-3/8"	11-3/4"	SSIDØTY90	0.6
7" to 8"	7-1/8"	13-1/2"	SSIDØTY90	0.6
10"	7-3/4"	14-1/4"	SSID10TY90	0.6
12"	8-1/2"	15-7/8"	SSID12TY90	0.6
14"	9-1/4"	17-5/8"	SSID14TY90	0.6
16"	9-7/8"	18-3/8"	SSID16TY90	0.6
18"	10-5/8"	21"	SSID18TY90	0.6
20"	11-3/8"	21-3/4"	SSID20TY90	0.6
22"	12"	22-1/2"	SSID22TY90	0.6

Available with smaller snout. 9" and 24" not available.

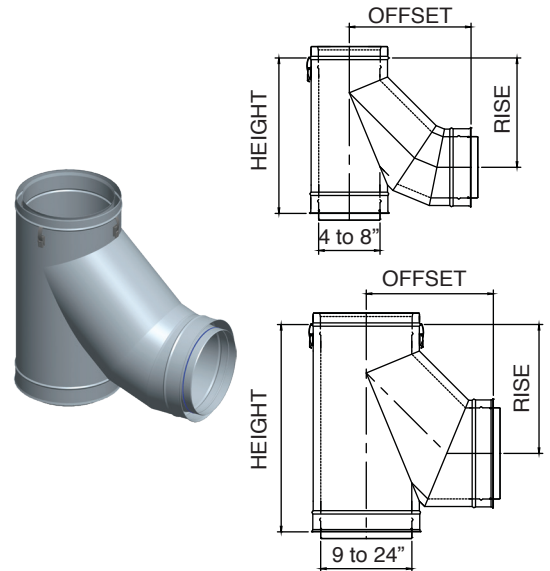


SSD Lateral SecureTEE

Use to transition from horizontal to vertical with improved flue gas flow.

Ø	Height	Offset	Rise	Product Code SSD	K Factor
3"	13-3/8"	11-1/8"	9"	SSD3BT	0.55
4"	14-3/8"	11-5/8"	10"	SSD4BT	0.55
5"	16-3/8"	12-1/4"	11"	SSD5BT	0.55
6"	17-3/8"	13-3/4"	12-1/4"	SSD6BT	0.55
7"	19-3/8"	14-3/4"	13-1/4"	SSD7BT	0.55
8"	20-3/8"	16"	14-3/8"	SSD8BT	0.55
9"	23-3/8"	14-1/4"	14-1/4"	SSD9BT	0.55
10"	25-3/8"	15-1/4"	15-1/4"	SSD10BT	0.55
12"	27-3/8"	16-7/8"	17"	SSD12BT	0.55
14"	30-3/8"	18-7/8"	18-7/8"	SSD14BT	0.55
16"	33-3/8"	20-3/4"	20-3/4"	SSD16BT	0.55
18"	38-1/8"	22-1/2"	22-1/2"	SSD18BT	0.55
20"	42-1/8"	24-3/4"	24-3/8"	SSD20BT	0.55
22"	45-1/8"	26-1/4"	26-1/4"	SSD22BT	0.55
24"	51-1/8"	28"	28-1/8"	SSD24BT	0.55

Available with smaller snout and custom height.



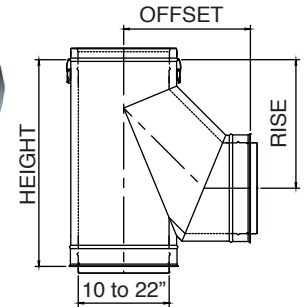
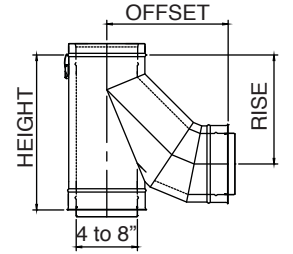
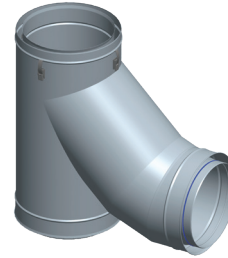
SSD & SSID Venting Tees

SSID Lateral SecureTEE

Use to transition from horizontal to vertical with improved flue gas flow. 9" and 24" not available.

Ø	Height	Offset	Rise	Product Code SSID	K Factor
4"	17-3/8"	13-3/4"	12-1/4"	SSID4BT	0.55
5"	19-3/8"	14-3/4"	13-1/4"	SSID5BT	0.55
6"	20-3/8"	16"	14-3/8"	SSID6BT	0.55
7"	23-3/8"	14-1/4"	14-1/4"	SSID7BT	0.55
8"	25-3/8"	15-1/4"	15-1/4"	SSID8BT	0.55
10"	27-3/8"	16-7/8"	17"	SSID10BT	0.55
12"	30-3/8"	18-7/8"	18-7/8"	SSID12BT	0.55
14"	33-3/8"	20-3/4"	20-3/4"	SSID14BT	0.55
16"	38-1/8"	22-1/2"	22-1/2"	SSID16BT	0.55
18"	42-1/8"	24-3/4"	24-3/8"	SSID18BT	0.55
20"	45-1/8"	26-1/4"	26-1/4"	SSID20BT	0.55
22"	51-1/8"	28"	28-1/8"	SSID22BT	0.55

Available with smaller snout and custom height.

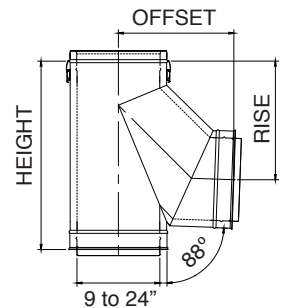
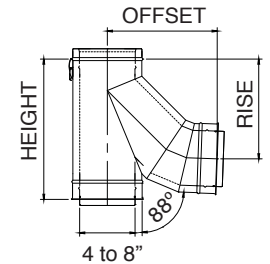
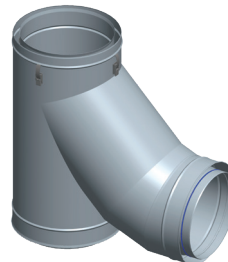


SSD Lateral SecureTEE 88-Degree

Use to transition from horizontal to vertical with improved flue gas flow.

Ø	Height	Offset	Rise	Product Code SSD	K Factor
3"	13-3/8"	11-1/8"	9"	SSD3BT88	0.55
4"	14-3/8"	11-5/8"	10-1/4"	SSD4BT88	0.55
5"	16-3/8"	12-1/4"	11-3/8"	SSD5BT88	0.55
6"	17-3/8"	13-3/4"	12-3/4"	SSD6BT88	0.55
7"	19-3/8"	14-7/8"	13-3/4"	SSD7BT88	0.55
8"	20-3/8"	16-1/8"	15"	SSD8BT88	0.55
9"	23-3/8"	14-1/2"	15-1/4"	SSD9BT88	0.55
10"	25-3/8"	15-3/8"	16-1/8"	SSD10BT88	0.55
12"	28-3/8"	17"	17-7/8"	SSD12BT88	0.55
14"	31-3/8"	19-1/8"	20-1/8"	SSD14BT88	0.55
16"	33-3/8"	21"	22"	SSD16BT88	0.55
18"	38-3/8"	22-7/8"	24"	SSD18BT88	0.55
20"	42-1/8"	24-3/4"	26"	SSD20BT88	0.55
22"	45-1/8"	26-5/8"	28"	SSD22BT88	0.55
24"	51-1/8"	28-1/2"	29-7/8"	SSD24BT88	0.55

Available with smaller snout and custom height.

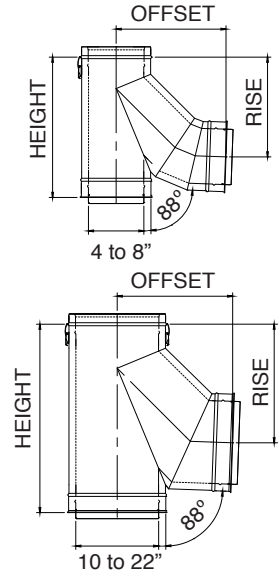
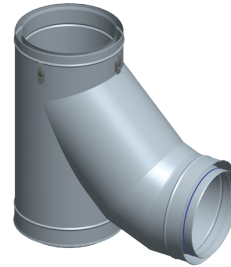


SSD & SSID Venting Tees

SSD Lateral SecureTEE 88-Degree

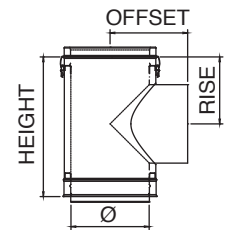
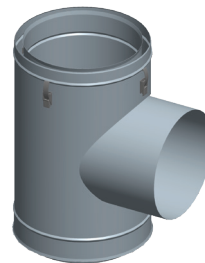
Use to transition from horizontal to vertical with improved flue gas flow. 9" and 24" not available.

Ø	Height	Offset	Rise	Product Code SSID	K Factor
4"	17-3/8"	13-3/4"	12-3/4"	SSID4BT88	0.55
5"	19-3/8"	14-7/8"	13-3/4"	SSID5BT88	0.55
6"	20-3/8"	16-1/8"	15"	SSID6BT88	0.55
7"	23-3/8"	14-1/2"	15-1/4"	SSID7BT88	0.55
8"	25-3/8"	15-3/8"	16-1/8"	SSID8BT88	0.55
10"	28-3/8"	17"	17-7/8"	SSID10BT88	0.55
12"	31-3/8"	19-1/8"	20-1/8"	SSID12BT88	0.55
14"	33-3/8"	21"	22"	SSID14BT88	0.55
16"	38-3/8"	22-7/8"	24"	SSID16BT88	0.55
18"	42-1/8"	24-3/4"	26"	SSID18BT88	0.55
20"	45-1/8"	26-5/8"	28"	SSID20BT88	0.55



SSD Barometric Tee

Ø	Height	Offset	Rise	Product Code SSD	K Factor
3"	12-1/2"	8"	6"	SSD3BMT	0.2
4"	13-1/2"	8"	6-1/2"	SSD4BMT	0.2
5"	14-1/2"	9"	7"	SSD5BMT	0.2
6"	15-1/2"	9"	7-1/2"	SSD6BMT	0.2
7"	16-1/2"	10"	8"	SSD7BMT	0.2
8"	17-1/2"	10"	8-1/2"	SSD8BMT	0.2
9"	18-1/2"	11"	9"	SSD9BMT	0.2
10"	19-1/2"	11"	9-1/2"	SSD10BMT	0.2
12"	21-1/2"	12"	10-1/2"	SSD12BMT	0.2
14"	23-1/2"	13"	11-1/2"	SSD14BMT	0.2
16"	25-1/2"	14"	12-1/2"	SSD16BMT	0.2
18"	27-1/2"	15"	13-1/2"	SSD18BMT	0.2
20"	29-1/2"	16"	14-1/2"	SSD20BMT	0.2
22"	31-1/2"	17"	15-1/2"	SSD22BMT	0.2
24"	33-1/2"	18"	16-1/2"	SSD24BMT	0.2

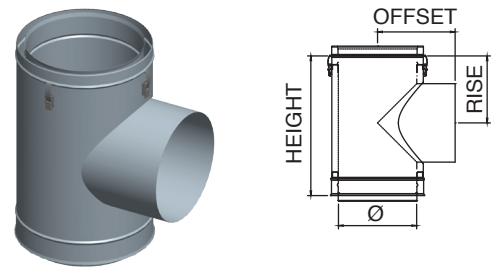


SSD & SSID Venting Tees

SSID Barometric Tee

Ø	Height	Offset	Rise	Product Code SSID	K Factor
4"	15-1/2"	9"	7-1/2"	SSID4BMT	0.2
5"	16-1/2"	10"	8"	SSID5BMT	0.2
6"	17-1/2"	10"	8-1/2"	SSID6BMT	0.2
7"	18-1/2"	11"	9"	SSID7BMT	0.2
8"	19-1/2"	11"	9-1/2"	SSID8BMT	0.2
10"	21-1/2"	12"	10-1/2"	SSID10BMT	0.2
12"	23-1/2"	13"	11-1/2"	SSID12BMT	0.2
14"	25-1/2"	14"	12-1/2"	SSID14BMT	0.2
16"	27-1/2"	15"	13-1/2"	SSID16BMT	0.2
18"	29-1/2"	16"	14-1/2"	SSID18BMT	0.2
20"	31-1/2"	17"	15-1/2"	SSID20BMT	0.2
22"	33-1/2"	18"	16-1/2"	SSID22BMT	0.2

Available with smaller snout and custom height. 9" and 24" not available.



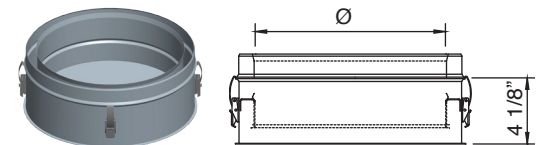
SSD & SSID Venting Accessories

SSD & SSID Tee Cap

Use to cap Standard Tee, Branch Tee or Boot Tee. Remove Tee Cap to inspect the system; clean out debris or collected condensate.

Ø	Height	Product Code SSD	Product Code SSID
3" to 24"	4-1/8"	SSDØTC	SSIDØTC

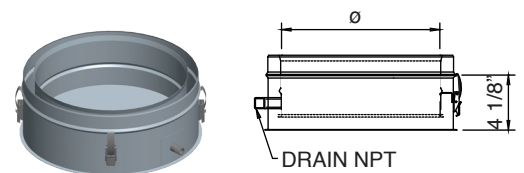
Note: SSID 3", 9" and 24" not available.



SSD & SSID Drain Tee Cap

Ø	Height	Product Code SSD	Product Code SSID
3" to 24"	4-1/8"	SSDØDTC	SSIDØDTC

Drain plug not included.
 Drain Ø4 – Ø10, 1/4 NPT, 1/2 O.D.
 Drain Ø12 – Ø24, 3/8 NPT, 5/8 O.D.
 Note: SSID 3", 9" and 24" not available.



SSD & SSID Barometric Tee Cap

Ø	Height	Product Code SSD	Product Code SSID
3" to 24"	3-1/2"	SSØBMT	SSØBMT

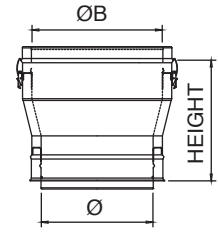


SSD & SSID Venting Accessories

SSD & SSID Tapered Inserter

Use to increase vent diameter. Creates a smooth transition for an undistruptive flow. Available in custom size combinations.

Ø	ØB Available	Height	Product Code SSD	Product Code SSID	K Factor
3" to 9"	Ø+1"	12-7/16"	SSDØTIN(ØB)	SSIDØTIN(ØB)	0.05
4" to 22"	Ø+2"	13-7/16"	SSDØTIN(ØB)	SSIDØTIN(ØB)	0.10
4" to 9"	Ø+3"	14-7/16"	SSDØTIN(ØB)	SSIDØTIN(ØB)	0.15
4" to 20"	Ø+4"	15-7/16"	SSDØTIN(ØB)	SSIDØTIN(ØB)	0.20
4" to 7"	Ø+5"	16-7/16"	SSDØTIN(ØB)	SSIDØTIN(ØB)	0.25
4" to 18"	Ø+6"	17-7/16"	SSDØTIN(ØB)	SSIDØTIN(ØB)	0.30

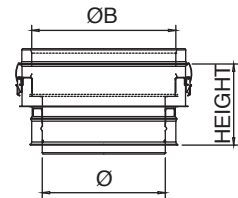
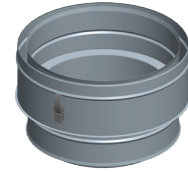


Note: SSID 9" and 24" not available.

SSD & SSID Step Inserter

Use to increase vent diameter when space constraints are an issue. Available in custom size combinations.

Ø	ØB Available	Height	Product Code SSD	Product Code SSID	K Factor
3" to 22"	5" to 24"	8"	SSDØSIN(ØB)	SSIDØSIN(ØB)	$KØ = (1 - \frac{2}{Ø})^2$ $KØB = KØ / 4$ $= Ø / ØB$

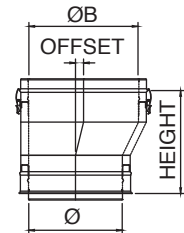


Note: SSID 3", 9" and 24" not available.

SSD & SSID Eccentric Tapered Inserter

Use to transition to a larger diameter pipe. Prevents condensate puddling when used on horizontal runs. Aids in reducing formation of condensates. Maximum 10" difference between diameter increase size on both sizes. Available in custom size combinations.

Ø	ØB Available	Height	Offset	Product Code SSD	Product Code SSID	K Factor
3" to 9"	Ø+1"	12-1/2"	1/2"	SSDØETIN(ØB)	SSIDØETIN(ØB)	0.05
4" to 22"	Ø+2"	13-1/2"	1"	SSDØETIN(ØB)	SSIDØETIN(ØB)	0.10
4" to 9"	Ø+3"	14-1/2"	1-1/2"	SSDØETIN(ØB)	SSIDØETIN(ØB)	0.15
4" to 20"	Ø+4"	15-1/2"	2"	SSDØETIN(ØB)	SSIDØETIN(ØB)	0.20
4" to 7"	Ø+5"	16-1/2"	2-1/2"	SSDØETIN(ØB)	SSIDØETIN(ØB)	0.25
4" to 18"	Ø+6"	17-1/2"	3"	SSDØETIN(ØB)	SSIDØETIN(ØB)	0.30

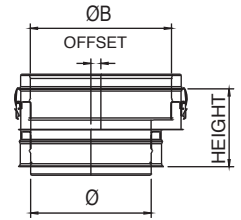
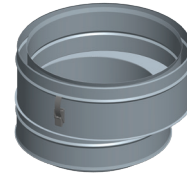


Note: SSID 3", 9" and 24" not available.

SSD & SSID Venting Accessories

SSD & SSID Eccentric Step In increaser

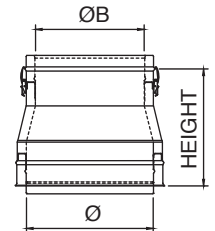
Ø	ØB Available	Height	Offset	Product Code SSD	Product Code SSID	K Factor
3" to 22"	5" to 24"	8"	$(\text{ØB}-\text{Ø})/2$	SSDØESIN(ØB)	SSIDØESIN(ØB)	$K\text{Ø}=(1-2)^2$ $K\text{ØB}=K\text{Ø}^4$ $=\text{Ø}/\text{ØB}$



Note: SSID 3", 9" and 24" not available.

SSD & SSID Tapered Reducer

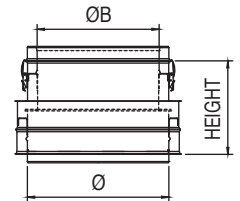
Ø	ØB Available	Height	Product Code SSD	Product Code SSID	K Factor
5" to 10"	Ø-1"	12-7/16"	SSDØTRD(ØB)	SSIDØTRD(ØB)	0.07
6" to 24"	Ø-2"	13-7/16"	SSDØTRD(ØB)	SSIDØTRD(ØB)	0.09
6" to 12"	Ø-3"	14-7/16"	SSDØTRD(ØB)	SSIDØTRD(ØB)	0.11
8" to 24"	Ø-4"	15-7/16"	SSDØTRD(ØB)	SSIDØTRD(ØB)	0.13
9" to 24"	Ø-5"	16-7/16"	SSDØTRD(ØB)	SSIDØTRD(ØB)	0.15
10" to 24"	Ø-6"	17-7/16"	SSDØTRD(ØB)	SSIDØTRD(ØB)	0.17



Note: SSID 9" and 24" not available.

SSD & SSID Step Reducer

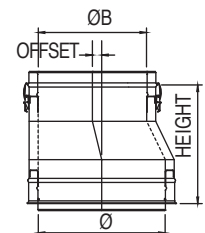
Ø	ØB Available	Height	Product Code SSD	Product Code SSID	K Factor
5" to 24"	4" to 22"	8"	SSDØSRD(ØB)	SSIDØSRD(ØB)	$K\text{ØB}=0.5(1-2)^2$ $K\text{Ø}=K\text{ØB}^4=\text{ØB}/\text{Ø}$



Note: SSID 9" and 24" not available.

SSD & SSID Eccentric Tapered Reducer

Ø	ØB Available	Height	Offset	Product Code SSD	Product Code SSID	K Factor
5" to 10"	Ø-1"	12-1/2"	1/2"	SSDØETRD(ØB)	SSIDØETRD(ØB)	0.07
6" to 24"	Ø-2"	13-1/2"	1"	SSDØETRD(ØB)	SSIDØETRD(ØB)	0.09
6" to 12"	Ø-3"	14-1/2"	1-1/2"	SSDØETRD(ØB)	SSIDØETRD(ØB)	0.11
8" to 24"	Ø-4"	15-1/2"	2"	SSDØETRD(ØB)	SSIDØETRD(ØB)	0.13
9" to 24"	Ø-5"	16-1/2"	2-1/2"	SSDØETRD(ØB)	SSIDØETRD(ØB)	0.15
10" to 24"	Ø-6"	17-1/2"	3"	SSDØETRD(ØB)	SSIDØETRD(ØB)	0.17



Note: SSID 9" and 24" not available.

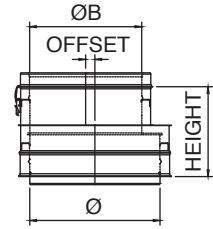
SSD & SSID Venting Accessories

SSD & SSID Eccentric Step Reducer

Ø	ØB Available	Height	Offset
5" to 24"	4" to 22"	8"	(Ø-ØB)/2

Product Code SSD	Product Code SSID	K Factor
SSDØESRD(ØB)	SSIDØESRD(ØB)	$KØB = 0.5 (1 - ^2) KØ = KØB / ^4 = ØB / Ø$

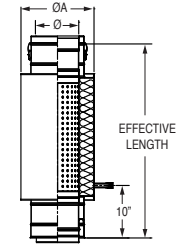
Note: SSID 9" and 24" not available.



SSD Universal Muffler

Use to reduce the noise of an appliance. Install as a regular section in the evacuation line. No adaptors required. Drain plug not included.

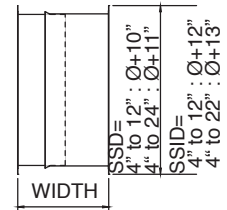
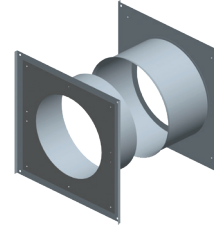
Ø	ØA	Effective Length	Product Code
6" to 14"	12" to 20"	37"	SSDØMUFLERU



SSD & SSID Wall Thimble

Ø	Width	Product Code SSD	Product Code SSID
3" to 24"	9" to 17"	SSDØWT	SSIDØWT

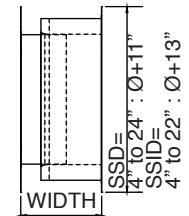
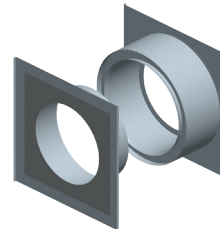
Note: SSID 3", 9" and 24" not available.
Wall penetration opening dimensions available in the installation instructions manual.



SSD & SSID Wall Thimble Insulated

Ø	Width	Product Code SSD	Product Code SSID
3" to 24"	9" to 17"	SSDØWTI	SSIDØWTI

Note: SSID 3", 9" and 24" not available.
Wall penetration opening dimensions available in the installation instructions manual.

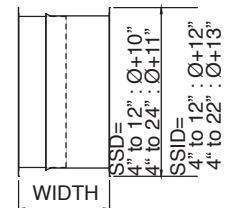
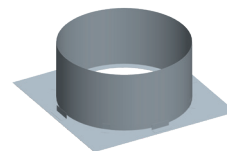


SSD & SSID Roof Thimble

Use when penetrating floor/roof levels.

Ø	Width	Product Code SSD	Product Code SSID
3" to 24"	10"	SSDØRTH	SSIDØRTH

Note: SSID 3", 9" and 24" not available.
Roof/floor penetration opening dimensions available in the installation instructions manual.

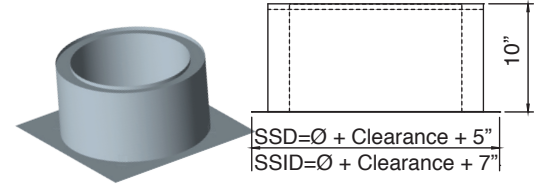


SSD & SSID Venting Accessories

SSD & SSID Roof Thimble Insulated

Ø	Width	Product Code SSD	Product Code SSID
3" to 24"	10"	SSDØRTI	SSIDØRTI

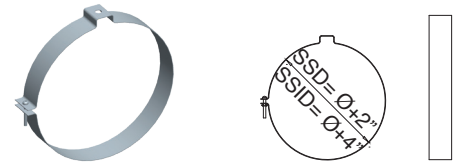
Note: SSID 3", 9" and 24" not available.
Roof penetration opening dimensions available in the installation instructions manual.



SSD & SSID Suspension Band

Ø	Product Code SSD	Product Code SSID
3" to 24"	SSDØSB	SSIDØSB

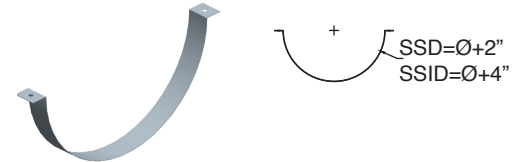
Note: SSID 3", 9" and 24" not available.



SSD & SSID Cradle Support

Ø	Product Code SSD	Product Code SSID
3" to 24"	SSDØCS	SSIDØCS

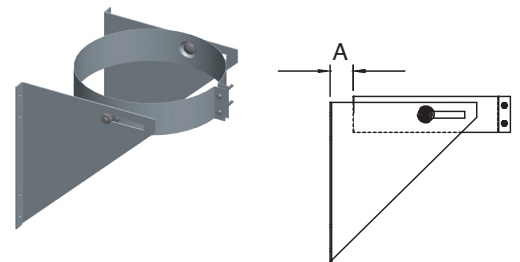
Note: SSID 3", 9" and 24" not available.



SSD & SSID Wall Support

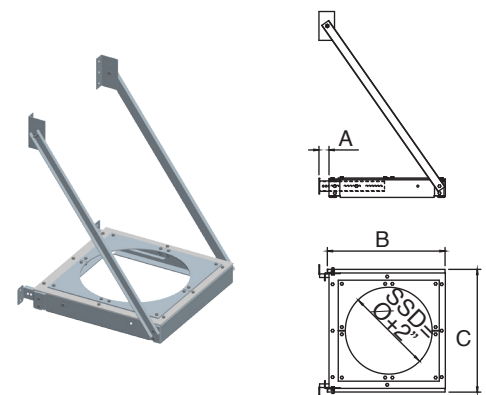
Ø	A	Product Code SSD	Product Code SSID
3" to 24"	1" to 3"	SSDØWS	SSIDØWS

Note: SSID 3", 9" and 24" not available.



SSD Wall Support HD

Ø	A	B	C	Product Code SSD
3"	1-1/2" to 6-1/2"	8"	12"	SSD3WSHD
4"	1-1/2" to 6-1/2"	9"	12"	SSD4WSHD
5"	1-1/2" to 6-1/2"	10"	12"	SSD5WSHD
6"	1-1/2" to 6-1/2"	11"	12"	SSD6WSHD
7"	1-1/2" to 6-1/2"	12"	14"	SSD7WSHD
8"	1-1/2" to 6-1/2"	13"	14"	SSD8WSHD
9"	1-1/2" to 6-1/2"	14"	14"	SSD9WSHD
10"	1-1/2" to 6-1/2"	15"	16"	SSD10WSHD
12"	1-1/2" to 6-1/2"	17"	16"	SSD12WSHD
14"	1-1/2" to 6-1/2"	19"	22"	SSD14WSHD
16"	1-1/2" to 6-1/2"	21"	22"	SSD16WSHD
18"	1-1/2" to 6-1/2"	23"	26"	SSD18WSHD
20"	1-1/2" to 6-1/2"	25"	30"	SSD20WSHD
22"	1-1/2" to 6-1/2"	27"	30"	SSD22WSHD
24"	1-1/2" to 6-1/2"	29"	30"	SSD24WSHD

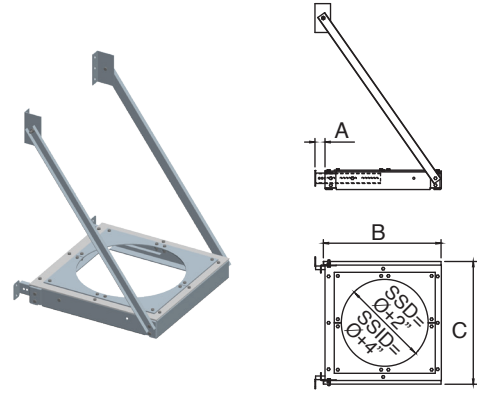


SSID Wall Support HD

SSD & SSID Venting Accessories

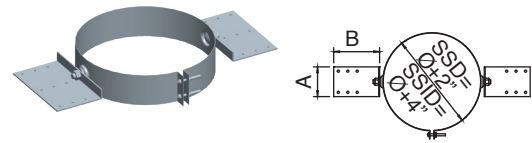
Ø	A	B	C	Product Code SSID
4"	1-1/2" to 6-1/2"	11"	12"	SSID4WSHD
5"	1-1/2" to 6-1/2"	12"	14"	SSID5WSHD
6"	1-1/2" to 6-1/2"	13"	14"	SSID6WSHD
7"	1-1/2" to 6-1/2"	14"	14"	SSID7WSHD
8"	1-1/2" to 6-1/2"	15"	16"	SSID8WSHD
10"	1-1/2" to 6-1/2"	17"	16"	SSID10WSHD
12"	1-1/2" to 6-1/2"	19"	22"	SSID12WSHD
14"	1-1/2" to 6-1/2"	21"	22"	SSID14WSHD
16"	1-1/2" to 6-1/2"	23"	26"	SSID16WSHD
18"	1-1/2" to 6-1/2"	25"	30"	SSID18WSHD
20"	1-1/2" to 6-1/2"	27"	30"	SSID20WSHD
22"	1-1/2" to 6-1/2"	29"	30"	SSID22WSHD

9" and 24" not available.



SSD & SSID Roof Support

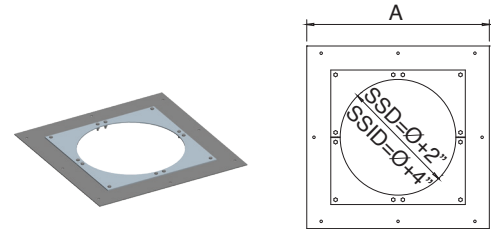
Ø	A	B	Product Code SSD	Product Code SSID
3" to 24"	6-1/2"	7-5/8"	SSDØRS	SSIDØRS



SSD & SSID Anchor Plate

Ø	A (SSD)	Product Code SSD	A (SSID)	Product Code SSID
3" to 24"	Ø+7"	SSDØAP	Ø+9"	SSIDØAP

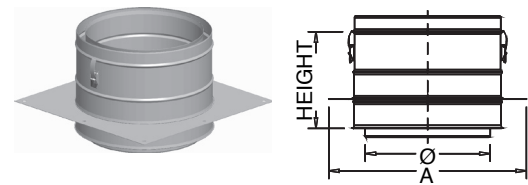
Note: SSID 3", 9" and 24" not available.



SSD & SSID Length Anchor Plate

Ø	A (SSD)	Product Code SSD	A (SSID)	Product Code SSID
3" to 24"	Ø+7"	SSDØAPL	Ø+9"	SSIDØAPL

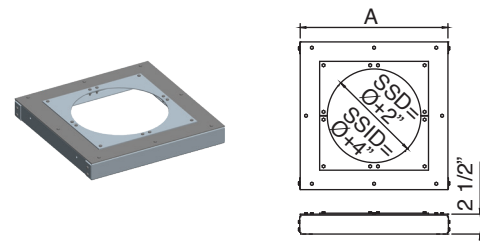
Note: SSID 3", 9" and 24" not available.



SSD & SSID Anchor Plate HD

Ø	A (SSD)	Product Code SSD	A (SSID)	Product Code SSID
3" to 24"	Ø+7"	SSDØAPHD	Ø+9"	SSIDØAPHD

Note: SSID 3", 9" and 24" not available.

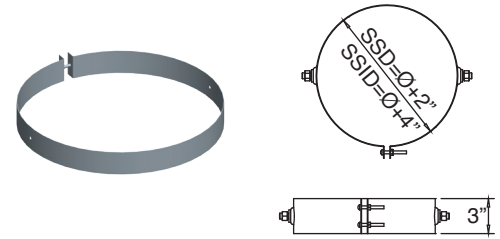


SSD & SSID Roof Brace

SSD & SSID Venting Accessories

Ø	Product Code SSD	Product Code SSID
3" to 24"	SSDØRB	SSIDØRB

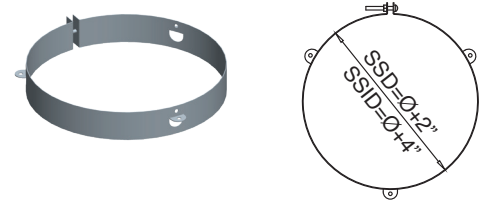
Note: SSID 3", 9" and 24" not available.



SSD & SSID Guy Wire Band

Ø	Product Code SSD	Product Code SSID
3" to 24"	SSDØGWB	SSIDØGWB

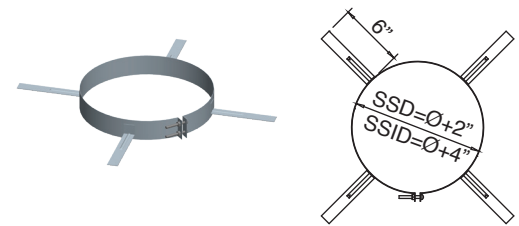
Note: SSID 3", 9" and 24" not available.



SSD & SSID Centering Band

Ø	Product Code SSD	Product Code SSID
3" to 24"	SSDØCB	SSIDØCB

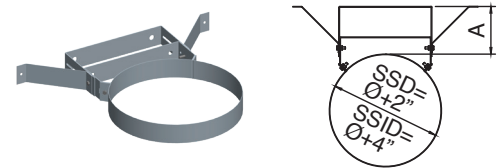
Note: SSID 3", 9" and 24" not available.



SSD & SSID Wall Guide

Ø	A	Product Code SSD	Product Code SSID
3" to 24"	1" to 4-1/2"	SSDØWG	SSIDØWG

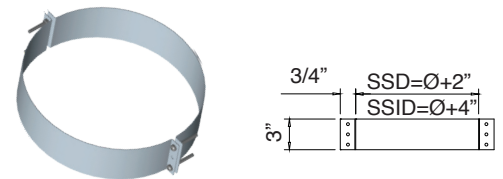
Note: SSID 3", 9" and 24" not available.



SSD & SSID Guy Support

Ø	Product Code SSD	Product Code SSID
3" to 24"	SSDØGS	SSIDØGS

Note: SSID 3", 9" and 24" not available.

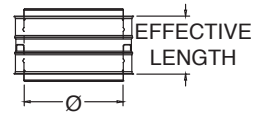
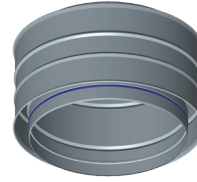


SSD & SSID Venting Accessories

SSD & SSID Double Male Adaptor

Ø	Effective Length	Product Code SSD	Product Code SSID
3" to 24"	7-1/8"	SSDØDMA	SSIDØDMA

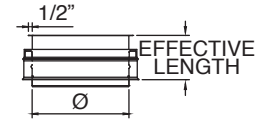
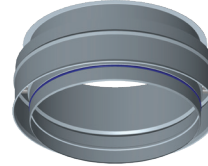
Note: SSID 3", 9" and 24" not available.



SSD & SSID Male Flange Adaptor

Ø	Effective Length	Product Code SSD	Product Code SSID
3" to 24"	5-1/2"	SSDØMFA	SSIDØMFA

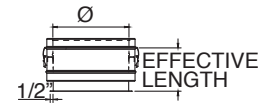
Includes V-bands, except in 3" and 4" diameters.



SSD & SSID Female Flange Adaptor

Ø	Effective Length	Product Code SSD	Product Code SSID
3" to 24"	6-7/8"	SSDØFFA	SSIDØFFA

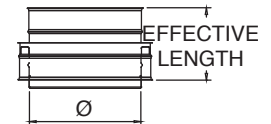
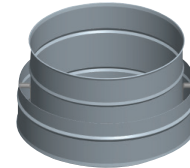
Note: SSID 3", 9" and 24" not available.



SSD & SSID to SS Adaptor

Ø	Effective Length	Product Code SSD	Product Code SSID
3" to 24"	7-7/8"	SSDØSSA	SSIDØSSA

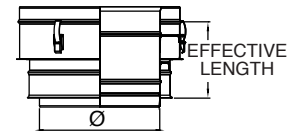
Note: SSID 3", 9" and 24" not available.



SSD to SSID Adaptor

Ø	Effective Length	Product Code SSD
3" to 24"	7-5/8"	SSDØSSIDA

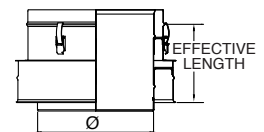
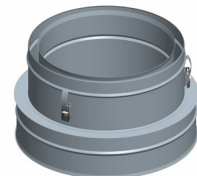
Note: SSID 3", 9" and 24" not available.



SSID to SSD Adaptor

Ø	Effective Length	Product Code SSD
3" to 24"	8-1/8"	SSIDØSSDA

Note: SSID 3", 9" and 24" not available.

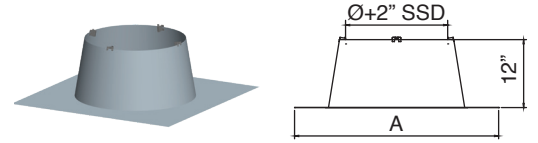


SSD & SSID Venting Accessories

SSD Flat Flashing

Use to create a weather tight penetration where the vent passes through the roof.

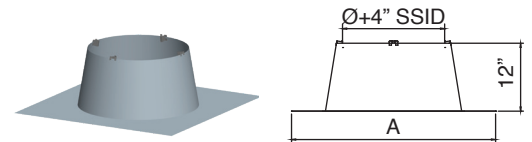
Ø	A	Product Code SSD
3"	14"	SSD3F
4"	16"	SSD4F
5"	18"	SSD5F
6"	26"	SSD6F
7"	26"	SSD7F
8"	28"	SSD8F
9"	30"	SSD9F
10"	30"	SSD10F
12"	31"	SSD12F
14"	34"	SSD14F
16"	36"	SSD16F
18"	38"	SSD18F
20"	40"	SSD20F
22"	42"	SSD22F
24"	44"	SSD24F



SSID Flat Flashing

Use to create a weather tight penetration where the vent passes through the roof.
9" and 24" not available.

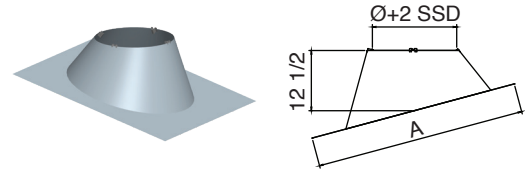
Ø	A	Product Code SSID
4"	26"	SSID4F
5"	26"	SSID5F
6"	28"	SSID6F
7"	30"	SSID7F
8"	30"	SSID8F
10"	31"	SSID10F
12"	34"	SSID12F
14"	36"	SSID14F
16"	38"	SSID16F
18"	40"	SSID18F
20"	42"	SSID20F
22"	44"	SSID22F



SSD & SSID Venting Accessories

SSD Adjustable Flashing

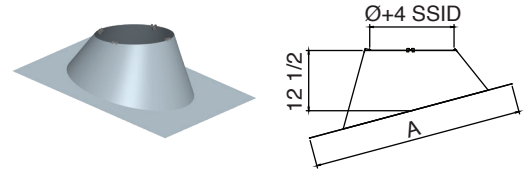
Ø	A	Height	Product Code SSD
3"	32"	12-1/2"	SSD3FA
4"	32"	12-1/2"	SSD4FA
5"	32"	12-1/2"	SSD5FA
6"	34"	12-1/2"	SSD6FA
7"	35-3/8"	12-1/2"	SSD7FA
8"	36-1/2"	12-1/2"	SSD8FA
9"	38"	12-1/2"	SSD9FA
10"	38-1/2"	12-1/2"	SSD10FA
12"	41"	12-1/2"	SSD12FA
14"	43"	12-1/2"	SSD14FA
16"	45"	12-1/2"	SSD16FA
18"	47-1/4"	12-1/2"	SSD18FA
20"	49-1/2"	12-1/2"	SSD20FA
22"	51-1/2"	12-1/2"	SSD22FA
24"	53-1/2"	12-1/2"	SSD24FA



Adjustable from 5° to 30°. Roof pitch 1/12" to 7/12".

SSID Adjustable Flashing

Ø	A	Height	Product Code SSID
4"	34"	12-1/2"	SSID4FA
5"	35-3/8"	12-1/2"	SSID5FA
6"	36-1/2"	12-1/2"	SSID6FA
7"	38"	12-1/2"	SSID7FA
8"	38-1/2"	12-1/2"	SSID8FA
10"	41"	12-1/2"	SSID10FA
12"	43"	12-1/2"	SSID12FA
14"	45"	12-1/2"	SSID14FA
16"	47-1/4"	12-1/2"	SSID16FA
18"	49-1/2"	12-1/2"	SSID18FA
20"	51-1/2"	12-1/2"	SSID20FA
22"	53-1/2"	12-1/2"	SSID22FA



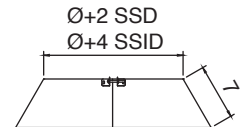
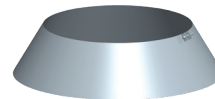
Adjustable from 5° to 30°. Roof pitch 1/12" to 7/12".
9" and 24" not available.

SSD & SSID Storm Collar

Use to create a weather tight seal between the pipe and flashing.

Ø	Product Code SSD	Product Code SSID
3" to 24"	SSDØSCH	SSIDØSC

Note: SSID 3", 9" and 24" not available.

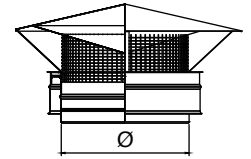
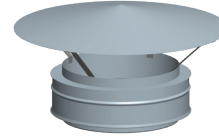


SSD & SSID Venting Terminations

SSD & SSID Rain Cap

Use to terminate above the roof line. Not recommended in cold climate as condensate can freeze on cap.

Ø	Product Code SSD	Product Code SSD w/ Bird Screen	K Factor	Product Code SSID	Product Code w/ SSID Bird Screen
3" to 24"	SSDØRC	SSDØRCB	.50	SSIDØRC	SSIDØRCB

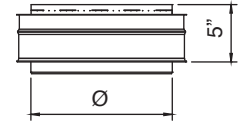
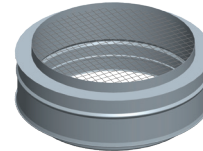


SSD & SSID Screened Termination

Use for horizontal through-the-wall terminations. Check installation instructions for restrictions on horizontal terminations, such as minimum distance from windows and doors.

Ø	Product Code SSD	Product Code SSID	K Factor
3" to 24"	SSDØST	SSIDØST	.14

Note: SSID 3", 9" and 24" not available.

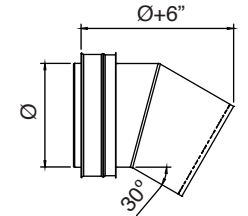
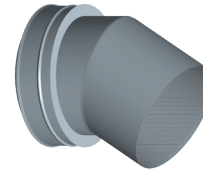


SSD & SSID 30° Screen Termination

Use for through-the-wall termination. Deters rain and other elements from entering the vent system. Check installation instructions for restrictions on horizontal terminations, such as minimum distance from windows and doors.

Ø	Product Code SSD	Product Code SSID	K Factor
3" to 24"	SSDØSTA	SSIDØSTA	.70

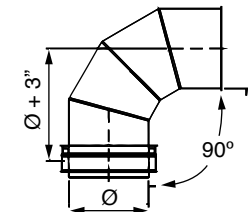
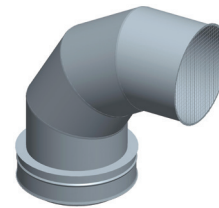
Note: SSID 3", 9" and 24" not available.



SSD 90° Screen Termination

Use for through-the-wall termination. Deters rain and other elements from entering the vent system. Check installation instructions for restrictions on horizontal terminations, such as minimum distance from windows and doors.

Ø	Product Code	K Factor
3" to 10"	SSDØST90A	.50

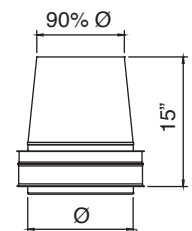


SSD & SSID Exit Cone

Use for vertical termination. Creates static back pressure to adjust harmonics. Venturi effect increases velocity of flue gases. Reduced opening provides for a smaller cross section to deter rain from entering the system.

Ø	Product Code SSD	Product Code SSID	K Factor
3" to 24"	SSDØEC	SSIDØEC	.60

Note: SSID 3", 9" and 24" not available.



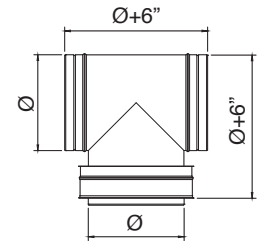
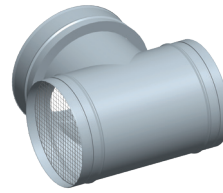
SSD & SSID Venting Terminations

SSD & SSID Termination Tee With Screen

Use for standard and high-wind through-the-wall terminations. Check installation instructions for restrictions on horizontal terminations, such as minimum distance from windows and doors.

Ø	Product Code SSD	Product Code SSID	K Factor
3" to 24"	SSDØTT	SSIDØTT	.35

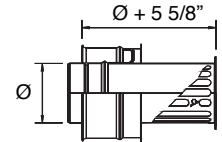
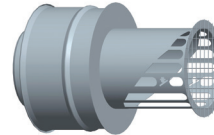
Note: SSID 3", 9" and 24" not available.



SSD & SSID Mitter Cut

Ø	Product Code SSD	Product Code SSID	K Factor
3" to 24"	SSDØMC	SSIDØMC	.14

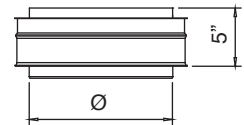
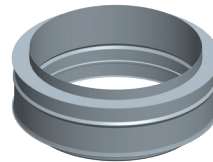
Note: SSID 3", 9" and 24" not available.



SSD & SSID Closer Termination

Ø	Product Code SSD	Product Code SSID	K Factor
3" to 24"	SSDØCT	SSIDØCT	0

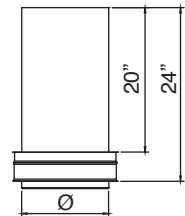
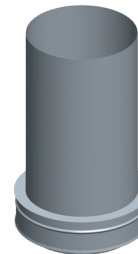
Note: SSID 3", 9" and 24" not available.



SSD & SSID OEM Termination

Ø	Product Code SSD	Product Code SSID	K Factor
3" to 24"	SSDØEMTA	SSIDØEMTA	0

Note: SSID 3", 9" and 24" not available.



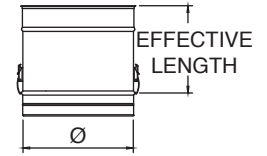
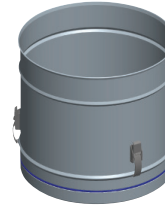
SS Venting Lengths

SS Lengths

Use to vent category II, III and IV appliances.

Ø	Effective Length	Product Code
3" to 24"	6-1/2"	SSØL9
3" to 24"	9-1/2"	SSØL12
3" to 24"	15-1/2"	SSØL18
3" to 24"	21-1/2"	SSØL24
3" to 24"	33-1/2"	SSØL36
5" to 9"	45-1/2"	SSØL48

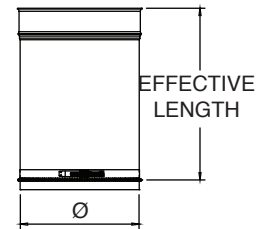
Note: SSØL48 only available in 316 material.



SS Adjustable Lengths

Use to add length to straight length of SS pipe. Adds 2"–14" of length. Requires at least 4" overlap for a secure connection.

Ø	Effective Length	Product Code
3" to 24"	4" to 5"	SSØAL9
3" to 24"	4" to 14"	SSØAL18

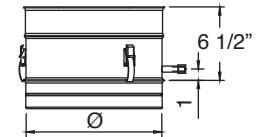
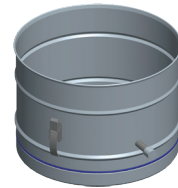


SS Test Port Lengths

Use to test for proper appliance operation without penetrating the vent wall. Easy access to perform flue gas analysis. Test port plug included.

Ø	Effective Length	Product Code
3" to 24"	6-1/2"	SSØTPL

Drain Ø4 – Ø24, 1/4 NPT, 1/2 O.D

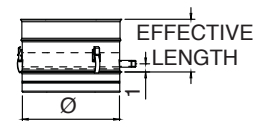
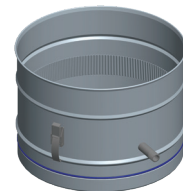


SS Drain Length

Use to properly manage corrosive condensates common with high efficiency gas appliances. For best results, install close to the appliance. Can be used horizontally, vertically, or any angle in between. Drain plug not included.

Ø	Effective Length	Product Code	K Factor
3" to 24"	6-1/2"	SSØDL	0.25

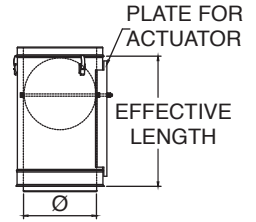
Drain Ø4 – Ø10, 1/4 NPT, 1/2 O.D
 Drain Ø12 – Ø24, 1/2 NPT, 5/8 O.D



SS Venting Lengths

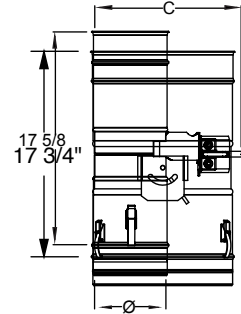
SS Damper Lengths

Ø	Effective Length	Product Code	K Factor
3" to 24"	21-3/16"	SSØDAMP	0.60 to 9999



SS K&W Fixed Blade Damper Lengths

Ø	Effective Length	Product Code
6" to 18"	17-3/4"	SSØKWDAMP



SS Motorized Damper Lengths

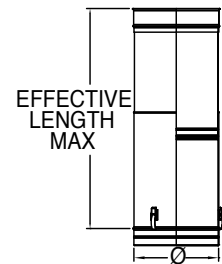
Ø	Effective Length	Product Code
3" to 18"	17-5/8"	SSØMOTDAMP

Note: SS 5", 7", 9", 11", 13", 15", and 17" not available.

SS Telescopic Length

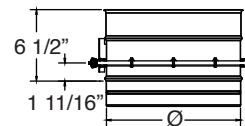
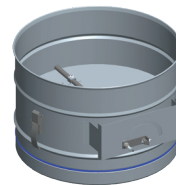
Telescopic lengths do not require cutting to fit dimension.

Ø	Effective Length	Product Code	
		32" Telescopic	20" Telescopic
3" to 24"	14" to 20"	SSØLAT32	SSØLAT20
3" to 24"	20" to 32"	SSØLAT32	SSØLAT20



SS Damper Length Short

Ø	Effective Length	Product Code	K Factor
3" to 24"	6-3/16"	SSØDAMPS	0 to 9999

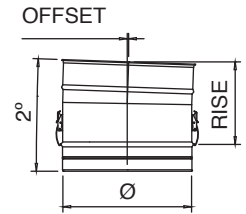


SS Venting Elbows

SS 2-Degree Elbow

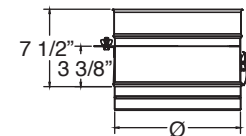
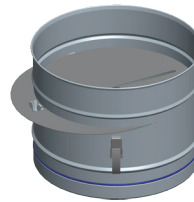
Offsets obstructions as needed. Allows for better condensate management and less back pressure.

Ø	Offset	Rise	Product Code	K Factor
3" to 4"	1/8"	7-1/8"	SSØE2	0.04
5" to 8"	1/8"	7-1/4"	SSØE2	0.04
9" to 12"	1/8"	7-3/8"	SSØE2	0.04
14"	1/8"	7-1/2"	SS14E2	0.03
16" to 18"	1/8"	7-5/8"	SSØE2	0.03
20" to 22"	1/8"	7-3/4"	SSØE2	0.03
24"	1/8"	7-7/8"	SS24E2	0.03



SS Vent Flow Regulator

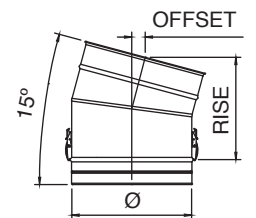
Ø	Effective Length	Product Code	K Factor
3" to 24"	7-1/8"	SSØVFR	0 to 9999



SS 15-Degree Elbow

Offsets obstructions as needed. Allows for better condensate management and less back pressure.

Ø	Offset	Rise	Product Code	K Factor
3"	1"	7-5/8"	SS3E15	0.32
4"	1"	7-7/8"	SS4E15	0.31
5"	1-1/8"	8-1/4"	SS5E15	0.30
6"	1-1/8"	8-1/2"	SS6E15	0.30
7"	1-1/8"	8-3/4"	SS7E15	0.29
8"	1-1/4"	9"	SS8E15	0.29
9"	1-1/4"	9-1/4"	SS9E15	0.28
10"	1-1/4"	9-1/2"	SS10E15	0.28
12"	1-3/8"	10"	SS12E15	0.27
14"	1-3/8"	10-1/2"	SS14E15	0.27
16"	1-1/2"	11"	SS16E15	0.26
18"	1-1/2"	11-1/2"	SS18E15	0.26
20"	1-5/8"	12-1/8"	SS20E15	0.26
22"	1-5/8"	12-5/8"	SS22E15	0.26
24"	1-3/4"	13-1/8"	SS24E15	0.26

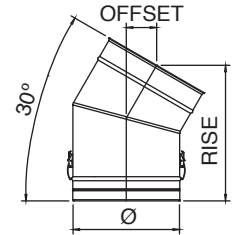


SS Venting Elbows

SS 30-Degree Elbow

Offsets obstructions as needed. Allows for better condensate management and less back pressure.

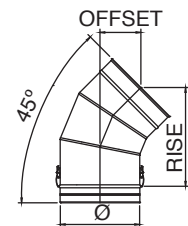
Ø	Offset	Rise	Product Code	K Factor
3"	2-1/8"	8"	SS3E30	0.62
4"	2-1/4"	8-1/2"	SS4E30	0.61
5"	2-3/8"	9"	SS5E30	0.60
6"	2-5/8"	9-1/2"	SS6E30	0.59
7"	2-3/4"	10"	SS7E30	0.58
8"	2-7/8"	10-1/2"	SS8E30	0.57
9"	3"	11"	SS9E30	0.56
10"	3-1/8"	11-1/2"	SS10E30	0.55
12"	3-3/8"	12-1/2"	SS12E30	0.54
14"	3-5/8"	13-1/2"	SS14E30	0.54
16"	3-7/8"	14-1/2"	SS16E30	0.53
18"	4-1/8"	15-1/2"	SS18E30	0.52
20"	4-1/2"	16-1/2"	SS20E30	0.52
22"	4-3/4"	17-1/2"	SS22E30	0.51
24"	5"	18-1/2"	SS24E30	0.51



SS 45-Degree Elbow

Offsets obstructions as needed. Allows for better condensate management and less back pressure.

Ø	Offset	Rise	Product Code	K Factor
3"	3-3/8"	8-1/8"	SS3E45	0.30
4"	4-1/4"	10-1/4"	SS4E45	0.26
5"	4"	9-1/2"	SS5E45	0.22
6"	4-1/4"	10-1/2"	SS6E45	0.17
7"	4-1/2"	10-7/8"	SS7E45	0.16
8"	4-7/8"	11-5/8"	SS8E45	0.14
9"	5-1/8"	12-3/8"	SS9E45	0.13
10"	5-3/8"	13"	SS10E45	0.12
12"	6"	14-1/2"	SS12E45	0.11
14"	6-5/8"	15-7/8"	SS14E45	0.11
16"	7-1/8"	17-1/4"	SS16E45	0.10
18"	7-3/4"	18-3/4"	SS18E45	0.09
20"	8-3/8"	20-1/8"	SS20E45	0.08
22"	8-7/8"	21-1/2"	SS22E45	0.08
24"	9-1/2"	23"	SS24E45	0.08

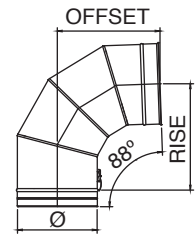
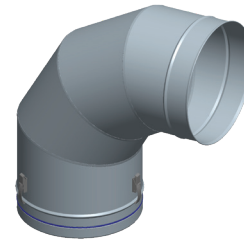


SS Venting Elbows

SS 88-Degree Elbow

Offsets obstructions as needed. Allows for better condensate management and less back pressure.

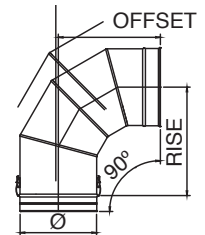
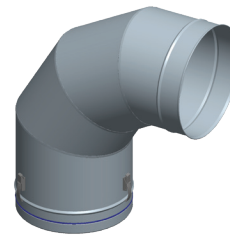
Ø	Offset	Rise	Product Code	K Factor
3"	6-3/8"	6-5/8"	SS3E88	0.60
4"	7-3/8"	7-5/8"	SS4E88	0.54
5"	8-3/8"	8-5/8"	SS5E88	0.48
6"	9-1/4"	9-5/8"	SS6E88	0.42
7"	10-1/4"	10-5/8"	SS7E88	0.39
8"	11-1/4"	11-5/8"	SS8E88	0.37
9"	12-1/4"	12-5/8"	SS9E88	0.34
10"	13-1/8"	13-5/8"	SS10E88	0.32
12"	15-1/8"	15-5/8"	SS12E88	0.29
14"	17"	17-5/8"	SS14E88	0.27
16"	19"	19-5/8"	SS16E88	0.25
18"	20-7/8"	21-5/8"	SS18E88	0.24
20"	22-7/8"	23-5/8"	SS20E88	0.23
22"	24-3/4"	25-5/8"	SS22E88	0.21
24"	26-5/8"	27-5/8"	SS24E88	0.20



SS 90-Degree Elbow

Use to go from horizontal to vertical runs or vertical to horizontal runs. Use to turn vent 90°.

Ø	Offset	Rise	Product Code	K Factor
3"	6-1/2"	6-1/2"	SS3E90	0.60
4"	7-1/2"	7-1/2"	SS4E90	0.54
5"	8-1/2"	8-1/2"	SS5E90	0.48
6"	9-1/2"	9-1/2"	SS6E90	0.42
7"	10-1/2"	10-1/2"	SS7E90	0.39
8"	11-1/2"	11-1/2"	SS8E90	0.37
9"	12-1/2"	12-1/2"	SS9E90	0.34
10"	13-1/2"	13-1/2"	SS10E90	0.32
12"	15-1/2"	15-1/2"	SS12E90	0.29
14"	17-1/2"	17-1/2"	SS14E90	0.27
16"	19-1/2"	19-1/2"	SS16E90	0.25
18"	21-1/2"	21-1/2"	SS18E90	0.24
20"	23-1/2"	23-1/2"	SS20E90	0.23
22"	25-1/2"	25-1/2"	SS22E90	0.21
24"	27-1/2"	27-1/2"	SS24E90	0.20



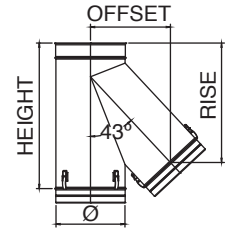
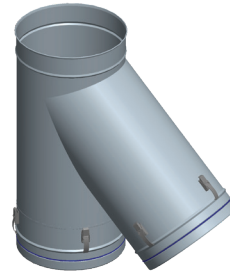
SS Venting Tees

SS 43-Degree Tee

Use in place of any tee for a 43° angle instead of 90°; can be used as a manifold connection to gang multiple boilers into a common vent.

Ø	Height	Offset	Rise	Product	K Factor
3"	13-1/4"	5-1/2"	10-3/8"	SS3T43	0.4
4"	14-1/4"	6-3/8"	11-1/8"	SS4T43	0.4
5"	15-1/4"	7-3/4"	12-7/8"	SS5T43	0.4
6"	17-1/4"	8-1/2"	13-3/4"	SS6T43	0.4
7"	18-1/4"	9-1/8"	14-3/4"	SS7T43	0.4
8"	20-1/4"	10-1/2"	16-3/8"	SS8T43	0.4
9"	21-1/4"	11-1/4"	17-1/4"	SS9T43	0.4
10"	22-1/4"	12-5/8"	19"	SS10T43	0.4
12"	25-1/4"	13-7/8"	20-3/4"	SS12T43	0.4
14"	29-1/4"	16"	23-3/8"	SS14T43	0.4
16"	32-1/4"	17-3/8"	25-1/4"	SS16T43	0.4
18"	35"	19-3/8"	27-7/8"	SS18T43	0.4
20"	38"	21-3/8"	30-3/8"	SS20T43	0.4
22"	41"	22-3/4"	32-1/4"	SS22T43	0.4
24"	44"	24-5/8"	34-5/8"	SS24T43	0.4

Available with smaller snout and custom height.

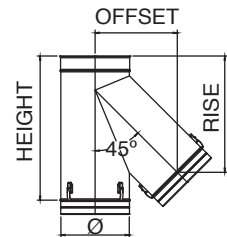
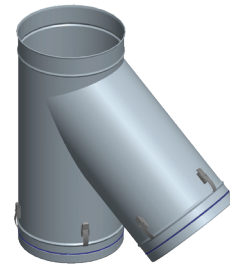


SS 45-Degree Tee

Use in place of any tee for a 45° angle instead of 90°; can be used as a manifold connection to gang multiple boilers into a common vent.

Ø	Height	Offset	Rise	Product	K
3"	13-1/4"	5-1/2"	10-3/8"	SS3T45	0.4
4"	14-1/4"	6-5/8"	11"	SS4T45	0.4
5"	15-1/4"	8-1/8"	12-5/8"	SS5T45	0.4
6"	17-1/4"	8-3/4"	13-1/2"	SS6T45	0.4
7"	18-1/4"	9-1/2"	14-3/8"	SS7T45	0.4
8"	20-1/4"	10-7/8"	16"	SS8T45	0.4
9"	21-1/4"	11-5/8"	17"	SS9T45	0.4
10"	22-1/4"	13"	17-5/8"	SS10T45	0.4
12"	25-1/4"	14-1/2"	20-3/8"	SS12T45	0.4
14"	29-1/4"	15-7/8"	22-1/4"	SS14T45	0.4
16"	32-1/4"	18-1/8"	24-7/8"	SS16T45	0.4
18"	35"	20-1/4"	27-1/2"	SS18T45	0.4
20"	38"	22-1/4"	29-7/8"	SS20T45	0.4
22"	41"	23-5/8"	31-5/8"	SS22T45	0.4
24"	44"	25-1/2"	34"	SS24T45	0.4

Available with smaller snout and custom height.



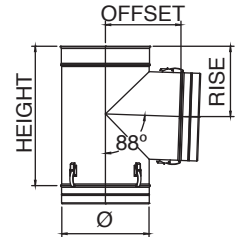
SS Venting Tees

SS 88-Degree Tee

Use for a 88° offset, or to combine connections from two or more appliances into a common vent. Can also use as a condensate management point when used in conjunction with drain fitting. All Standard Tees are completely welded.

Ø	Height	Offset	Rise	Product	K Factor
3"	10-1/4"	5-3/8"	5-1/4"	SS3T88	1.21
4"	11-1/4"	6-3/8"	5-5/8"	SS4T88	1.21
5"	12-1/4"	7-3/8"	6-1/4"	SS5T88	1.21
6"	13-1/4"	7-3/8"	6-5/8"	SS6T88	1.21
7"	14-1/4"	8-3/8"	7-1/4"	SS7T88	1.21
8"	15-1/4"	8-3/8"	7-5/8"	SS8T88	1.21
9"	16-1/4"	9-3/8"	8-1/4"	SS9T88	1.21
10"	17-1/4"	9-3/8"	8-5/8"	SS10T88	1.21
12"	19-1/4"	10-3/8"	9-3/4"	SS12T88	1.21
14"	21-1/4"	11-3/8"	10-3/4"	SS14T88	1.21
16"	23-1/4"	12-3/8"	11-3/4"	SS16T88	1.21
18"	25-1/4"	13-3/8"	12-3/4"	SS18T88	1.21
20"	27-1/4"	14-3/8"	13-3/4"	SS20T88	1.21
22"	29-1/4"	15-3/8"	14-3/4"	SS22T88	1.21
24"	31-1/4"	16-3/8"	15-3/4"	SS24T88	1.21

Available with smaller snout and custom height.



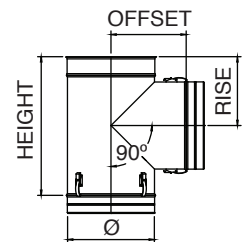
SS 90-Degree Tee

Use for a 90° offset, or to combine connections from two or more appliances into a common vent. Can also use as a condensate management point when used in conjunction with drain fitting. All Standard Tees are completely welded.

Ø	Height	Offset	Rise	Product Code	K Factor
3"	10-1/4"	5-3/8"	5-1/4"	SS3T90	1.21
4"	11-1/4"	6-3/8"	5-1/2"	SS4T90	1.21
5"	12-1/4"	7-3/8"	6"	SS5T90	1.21
6"	13-1/4"	7-3/8"	6-1/2"	SS6T90	1.21
7"	14-1/4"	8-3/8"	7"	SS7T90	1.21
8"	15-1/4"	8-3/8"	7-1/2"	SS8T90	1.21
9"	16-1/4"	9-3/8"	8"	SS9T90	1.21
10"	17-1/4"	9-3/8"	8-1/2"	SS10T90	1.21
12"	19-1/4"	10-3/8"	9-1/2"	SS12T90	1.21
14"	21-1/4"	11-3/8"	10-1/2"	SS14T90	1.21
16"	23-1/4"	12-3/8"	11-1/2"	SS16T90	1.21
18"	25-1/4"	13-3/8"	12-1/2"	SS18T90	1.21
20"	27-1/4"	14-3/8"	13-1/2"	SS20T90	1.21
22"	29-1/4"	15-3/8"	14-1/2"	SS22T90	1.21
24"	31-1/4"	16-3/8"	15-1/2"	SS24T90	1.21

Available with smaller snout and custom height.

Available with removeable branch code: SSøT90BRU

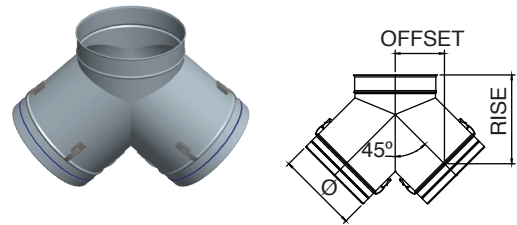


SS Venting Tees

SS 90-Degree Tee Y

Ø	Offset	Rise	Product Code	K Factor
3"	4-1/2"	8-1/2"	SS3TY90	0.6
4"	4-1/2"	8-1/2"	SS4TY90	0.6
5"	5-1/4"	10-1/8"	SS5TY90	0.6
6"	5-1/4"	10-1/8"	SS6TY90	0.6
7"	6"	10-7/8"	SS7TY90	0.6
8"	6"	10-7/8"	SS8TY90	0.6
9"	6-5/8"	12-5/8"	SS9TY90	0.6
10"	6-5/8"	12-5/8"	SS10TY90	0.6
12"	7-3/8"	13-1/4"	SS12TY90	0.6
14"	8-1/8"	15"	SS14TY90	0.6
16"	8-3/4"	16-3/4"	SS16TY90	0.6
18"	9-1/2"	17-3/8"	SS18TY90	0.6
20"	10-1/4"	18-1/8"	SS20TY90	0.6
22"	10-7/8"	18-7/8"	SS22TY90	0.6
24"	11-5/8"	20-1/2"	SS24TY90	0.6

Available with smaller snout and custom height.

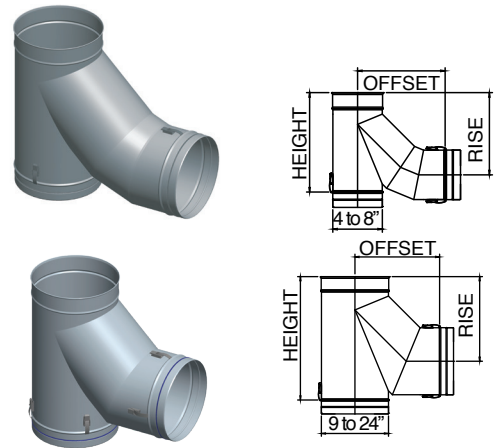


SS Lateral Secure Tee

Use to transition from horizontal to vertical with improved flue gas flow.

Ø	Height	Offset	Rise	Product	K Factor
3"	9-1/8"	8-1/2"	7-3/4"	SS3BT	0.55
4"	10-1/8"	9-1/4"	8-7/8"	SS4BT	0.55
5"	12-1/8"	10-1/2"	10"	SS5BT	0.55
6"	13-1/8"	11-3/4"	11-1/8"	SS6BT	0.55
7"	15-1/8"	13"	12-1/4"	SS7BT	0.55
8"	16-1/8"	14-1/4"	13-3/8"	SS8BT	0.55
9"	18-1/8"	12-1/2"	12-1/2"	SS9BT	0.55
10"	19-1/8"	13-3/8"	13-3/8"	SS10BT	0.55
12"	22-1/8"	15-1/4"	15-1/4"	SS12BT	0.55
14"	25-1/8"	17"	17"	SS14BT	0.55
16"	28-1/8"	18-7/8"	18-7/8"	SS16BT	0.55
18"	30-7/8"	20-3/4"	20-1/2"	SS18BT	0.55
20"	33-7/8"	22-1/2"	22-1/2"	SS20BT	0.55
22"	36-7/8"	24-3/8"	24-3/8"	SS22BT	0.55
24"	39-7/8"	26-1/8"	26-1/4"	SS24BT	0.55

Available with smaller snout and custom height.

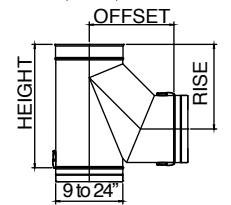
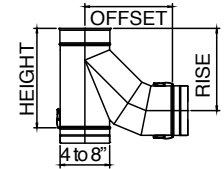
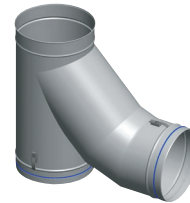
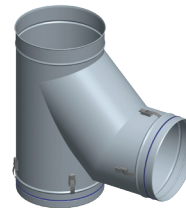


SS Venting Tees

SS Lateral Secure Tee 88-Degree

Use to transition from horizontal to vertical with improved flue gas flow.

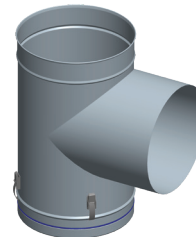
Ø	Height	Offset	Rise	Product	K Factor
3"	10-1/8"	8-1/2"	8-1/2"	SS3BT88	0.55
4"	11-1/8"	9-1/4"	9-1/4"	SS4BT88	0.55
5"	12-1/8"	10-1/2"	10-1/2"	SS5BT88	0.55
6"	14-1/8"	11-3/4"	11-3/4"	SS6BT88	0.55
7"	16-1/8"	13"	13"	SS7BT88	0.55
8"	17-1/8"	14-1/4"	14-1/8"	SS8BT88	0.55
9"	19-1/8"	12-5/8"	13-1/4"	SS9BT88	0.55
10"	20-1/8"	13-1/2"	14-1/4"	SS10BT88	0.55
12"	23-1/8"	15-3/8"	16-1/8"	SS12BT88	0.55
14"	26-1/8"	17-3/8"	18-1/8"	SS14BT88	0.55
16"	29-1/8"	19-1/8"	20-1/8"	SS16BT88	0.55
18"	31-7/8"	21"	22"	SS18BT88	0.55
20"	34-7/8"	22-7/8"	24"	SS20BT88	0.55
22"	37-7/8"	24-3/4"	26"	SS22BT88	0.55
24"	40-7/8"	26-5/8"	28"	SS24BT88	0.55



Available with smaller snout and custom height.

SS Barometric Tee

Ø	Height	Offset	Rise	Product	K
3"	10-1/4"	5"	5"	SS3BMT	0.2
4"	11-1/4"	5"	5-1/2"	SS4BMT	0.2
5"	12-1/4"	5"	6"	SS5BMT	0.2
6"	13-1/4"	6"	6-1/2"	SS6BMT	0.2
7"	14-1/4"	7"	7"	SS7BMT	0.2
8"	15-1/4"	8"	7-1/2"	SS8BMT	0.2
9"	16-1/4"	9"	8"	SS9BMT	0.2
10"	17-1/4"	10"	8-1/2"	SS10BMT	0.2
12"	19-1/4"	12"	9-1/2"	SS12BMT	0.2
14"	21-1/4"	14"	10-1/2"	SS14BMT	0.2
16"	23-1/4"	16"	11-1/2"	SS16BMT	0.2
18"	25-1/4"	18"	12-1/2"	SS18BMT	0.2
20"	27-1/4"	20"	13-1/2"	SS20BMT	0.2
22"	29-1/4"	22"	14-1/2"	SS22BMT	0.2
24"	31-1/4"	24"	15-1/2"	SS24BMT	0.2



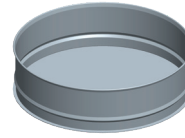
Available with smaller snout and custom height.

SS Venting Tees

SS Tee Cap

Use to cap Standard Tee, Branch Tee or Boot Tee. Remove Tee Cap to inspect the system; clean out debris or collected condensate.

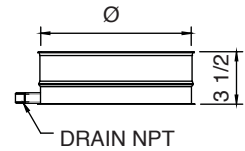
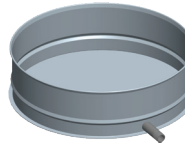
Ø	Height	Product Code
3" to 24"	3-1/2"	SSØTC



SS Drain Tee Cap

Use instead of Tee Cap to manage condensates at the bottom of a vertical run. Drain plug not included.

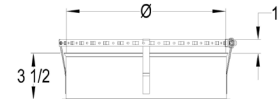
Ø	Height	Product Code
3" to 24"	3-1/2"	SSØDTC



Drain Ø4 – Ø10, 1/4 NPT, 1/2 O.D
 Drain Ø12 – Ø24, 3/8 NPT, 5/8 O.D

SS Barometric Tee Cap

Ø	Height	Product Code
3" to 24"	3-1/2"	SSØBMTc

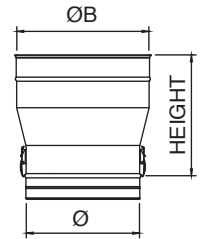


SS Venting Accessories

SS Tapered Increaser

Use to increase vent diameter. Creates a smooth transition for an undistruptive flow. Available in custom size combinations.

Ø	ØB Available	Height	Product Code	K Factor
3" to 9"	Ø+1"	11-7/8"	SSØTIN(ØB)	0.05
3" to 22"	Ø+2"	12-7/8"	SSØTIN(ØB)	0.10
3" to 9"	Ø+3"	13-7/8"	SSØTIN(ØB)	0.15
3" to 20"	Ø+4"	14-7/8"	SSØTIN(ØB)	0.20
3" to 7"	Ø+5"	15-7/8"	SSØTIN(ØB)	0.25
3" to 18"	Ø+6"	16-7/8"	SSØTIN(ØB)	0.30

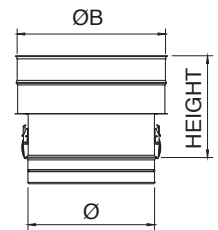


SS Step Increaser

Use to increase vent diameter when space constraints are an issue. Available in custom size combinations.

Ø	ØB Available	Height	Product Code	K Factor
3" to 22"	5" to 24"	10"	SSØSIN(ØB)	$KØ = (1-B^2)^2$ $KØB = KØ/B^4$

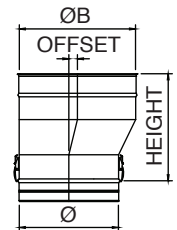
$B = Ø/ØB$



SS Eccentric Tapered Increaser

Use to transition to a larger diameter pipe. Prevents condensate puddling when used on horizontal runs. Aids in reducing formation of condensates. Available in custom size combinations.

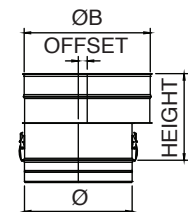
Ø	ØB Available	Height	Offset	Product Code	K Factor
3" to 9"	Ø+1"	12-1/4"	1/2"	SSØETIN(ØB)	0.05
3" to 22"	Ø+2"	13-1/4"	1"	SSØETIN(ØB)	0.10
3" to 9"	Ø+3"	14-1/4"	1-1/2"	SSØETIN(ØB)	0.15
3" to 20"	Ø+4"	15-1/4"	2"	SSØETIN(ØB)	0.20
3" to 7"	Ø+5"	16-1/4"	2-1/2"	SSØETIN(ØB)	0.25



SS Eccentric Step Increaser

Ø	ØB Available	Height	Offset	Product Code	K Factor
3" to 22"	5" to 24"	10"	$(ØB - ØA)/2"$	SSØESIN(ØB)	$KØ = (1-B^2)^2$ $KØB = KØ/B^4$

$B = Ø/ØB$

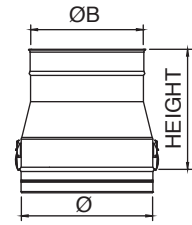


SS Venting Accessories

SS Tapered Reducer

Use to reduce vent diameter. Creates a smooth transition for an undistruptive flow. Available in custom size combinations.

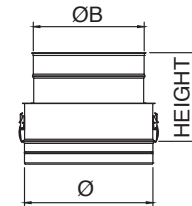
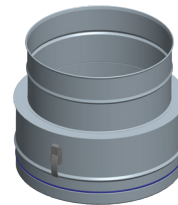
Ø	ØB	Height	Product Code	K Factor
5" to 10"	Ø+1"	11-7/8"	SSØTRD(ØB)	0.07
6" to 24"	Ø+2"	12-7/8"	SSØTRD(ØB)	0.09
6" to 12"	Ø+3"	13-7/8"	SSØTRD(ØB)	0.11
8" to 24"	Ø+4"	14-7/8"	SSØTRD(ØB)	0.13
9" to 24"	Ø+5"	15-7/8"	SSØTRD(ØB)	0.15
10" to 24"	Ø+6"	16-7/8"	SSØTRD(ØB)	0.17



SS Step Reducer

Use to reduce vent diameter when space constraints are an issue. Available in custom size combinations.

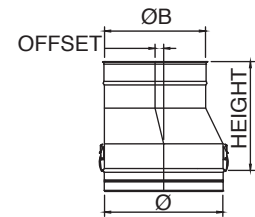
Ø	ØB	Height	Product Code	K Factor
5" to 24"	4" to 22"	10"	SSØSRD(ØB)	$KØ = (1-B^2)^2$ $KØB = KØ/B^4$



B= Ø/ØB

SS Eccentric Tapered Reducer

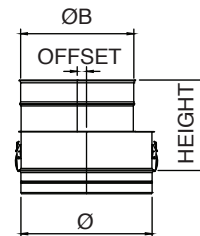
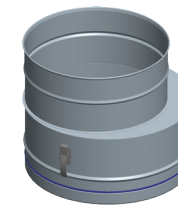
Ø	ØB Available	Height	Offset	Product Code	K
5" to 10"	Ø+1"	12-1/4"	1/2"	SSØETRD(ØB)	0.07
6" to 24"	Ø+2"	13-1/4"	1"	SSØETRD(ØB)	0.09
6" to 12"	Ø+3"	14-1/4"	1-1/2"	SSØETRD(ØB)	0.11
8" to 24"	Ø+4"	15-1/4"	2"	SSØETRD(ØB)	0.13
9" to 24"	Ø+5"	16-1/4"	2-1/2"	SSØETRD(ØB)	0.15
10" to 24"	Ø+6"	17-1/4"	3"	SSØETRD(ØB)	0.17



SS Eccentric Step Reducer

Ø	ØB Available	Height	Offset	Product Code	K Factor
5" to 10"	4" to 22"	10"	(ØA-ØB)/2"	SSØESRD(ØB)	$KØ = (1-B^2)^2$ $KØB = KØ/B^4$

B= Ø/ØB

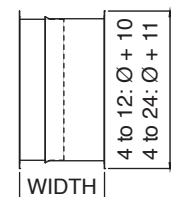
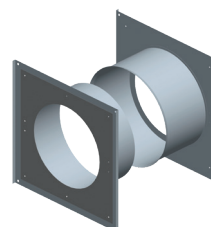


SS Wall Thimble

Use for through-the-wall installation. Fits between standard wall studs.

Ø	Height	Product Code
3" to 24"	9" to 17"	SSØWT

Wall penetration opening dimensions available in the installation instructions manual.

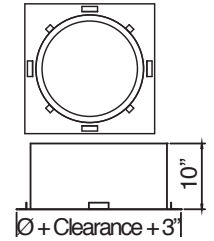
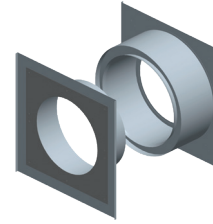


SS Venting Accessories

SS Wall Thimble Insulated

Ø	Height	Product Code
3" to 24"	9" to 17"	SSØWTI

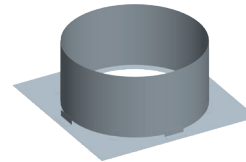
Wall penetration opening dimensions available in the installation instructions manual.



SS Roof Thimble

Ø	Height	Product Code
3" to 24"	10"	SSØRT

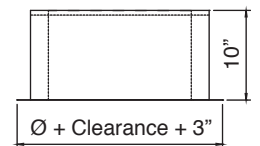
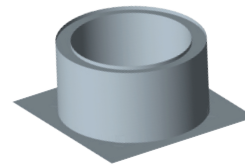
Roof/floor penetration opening dimensions available in the installation instructions manual.



SS Roof Thimble Insulated

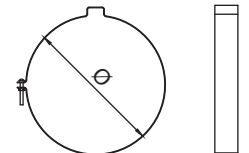
Ø	Height	Product Code
3" to 24"	10"	SSØRTI

Roof/floor penetration opening dimensions available in the installation instructions manual.



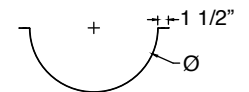
SS Suspension Band

Ø	Product Code
3" to 24"	SSØSB



SS Cradle Support

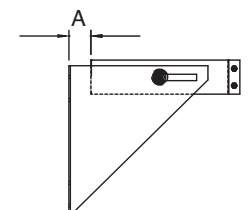
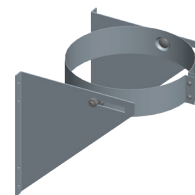
Ø	Product Code
3" to 24"	SSØCS



SS Wall Support

Use to support vent pipe or tee sections. Provides proper clearance to combustibles.

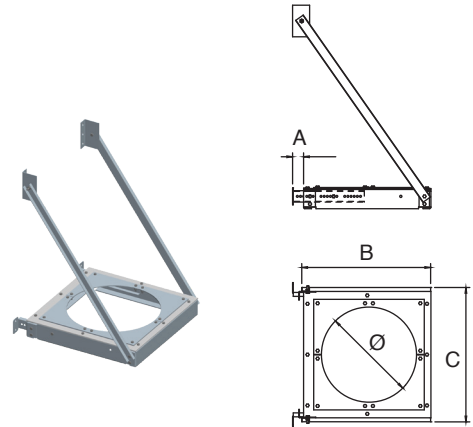
Ø	Height	Product Code
3" to 12"	2" to 5"	SSØWS
14" to 24"	4" to 7"	SSØWS



SS Venting Accessories

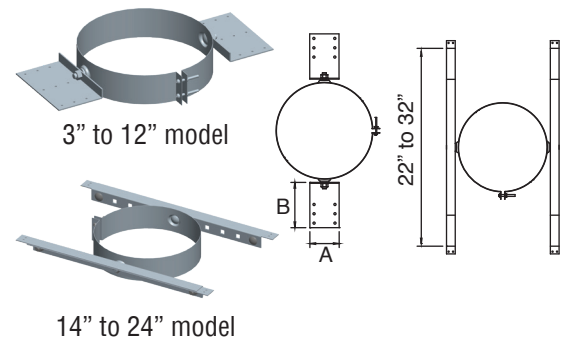
SS Wall Support HD

Ø	A	B	C	Product Code
3"	2" to 7"	7"	8"	SS3WSHD
4"	2" to 7"	7"	8"	SS4WSHD
5"	2" to 7"	9"	9"	SS5WSHD
6"	2" to 7"	12"	10"	SS6WSHD
7"	2" to 7"	12"	11"	SS7WSHD
8"	2" to 7"	12"	12"	SS8WSHD
9"	2" to 7"	14"	13"	SS9WSHD
10"	2" to 7"	14"	14"	SS10WSHD
12"	2" to 7"	16"	16"	SS12WSHD
14"	4" to 9"	22"	20"	SS14WSHD
16"	4" to 9"	22"	22"	SS16WSHD
18"	4" to 9"	26"	24"	SS18WSHD
20"	4" to 9"	26"	26"	SS20WSHD
22"	4" to 9"	30"	28"	SS22WSHD
24"	4" to 9"	30"	30"	SS24WSHD



SS Roof Support

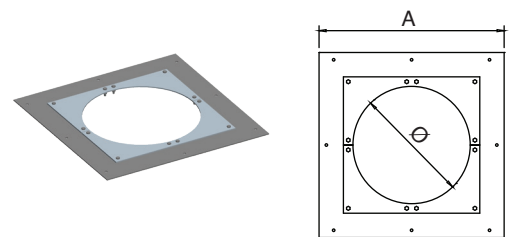
Ø	A	B	Product Code
3" to 12"	6-1/2"	7-5/8"	SSØRS
14" to 24"	22" to 32"		SSØRS



SS Anchor Plate

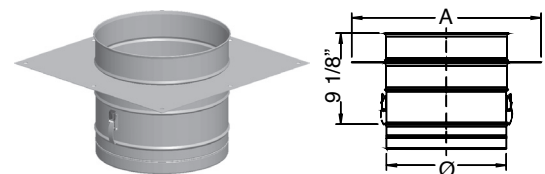
Use when penetrating floor levels.

Ø	A	Product Code
3" to 12"	Ø+7"	SSØAP
14" to 24"	Ø+11"	SSØAP



SS Length Anchor Plate

Ø	A	Product Code
3" to 12"	Ø+7"	SSØAPL
14" to 24"	Ø+11"	SSØAPL

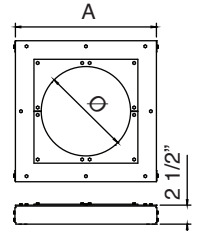
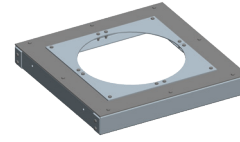


SS Venting Accessories

SS Anchor Plate HD

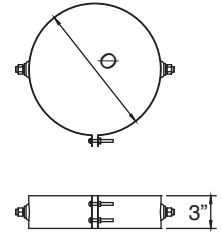
Use when penetrating floor levels.

\emptyset	A	Product Code
3" to 12"	$\emptyset+7"$	SS \emptyset APHD
14" to 24"	$\emptyset+11"$	SS \emptyset APHD



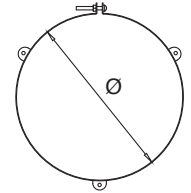
SS Roof Brace

\emptyset	Product Code
3" to 24"	SS \emptyset RB



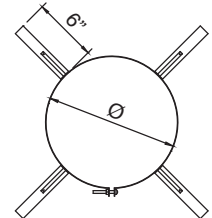
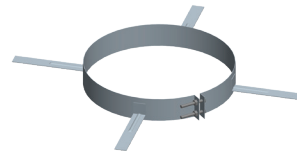
SS Guy Wire Band

\emptyset	Product Code
3" to 24"	SS \emptyset GWB



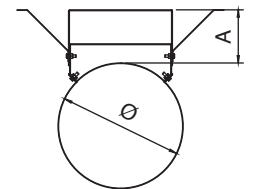
SS Centering Band

\emptyset	Product Code
3" to 24"	SS \emptyset CB



SS Wall Guide

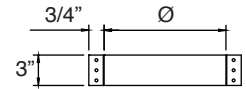
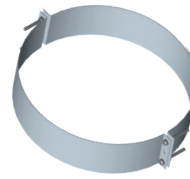
\emptyset	A	Product Code
3" to 24"	2" to 5-1/2"	SS \emptyset WG
14" to 24"	4" to 7-1/2"	SS \emptyset WG



SS Venting Accessories

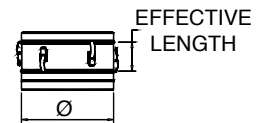
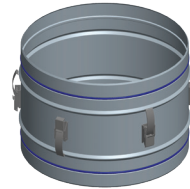
SS Guy Support

Ø	Product Code
3" to 24"	SSØGS



SS Double Male Adaptor

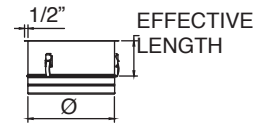
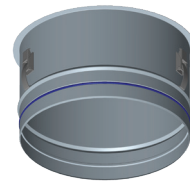
Ø	Effective Length	Product Code
3" to 24"	3-7/8"	SSØDMA



SS Male Flange Adaptor

Ø	Effective Length	Product Code
3" to 24"	4-7/8"	SSØMFA

Includes V-bands, except in 3" and 4" diameters.



SS Female Flange Adaptor

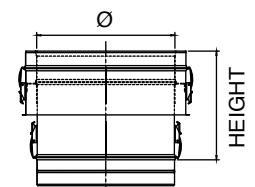
Ø	Effective Length	Product Code
3" to 24"	4-1/4"	SSØFFA

Includes V-bands, except in 3" and 4" diameters.



SS to SSD/SSID Adaptor

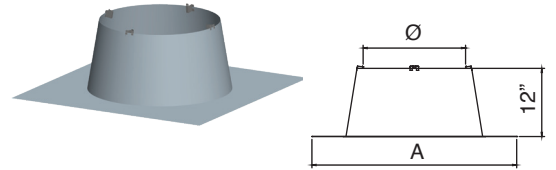
Ø	Effective Length	Product Code	Product Code
3" to 24"	7-7/8"	SSØSSDA	SSØSSIDA



SS Venting Accessoriess

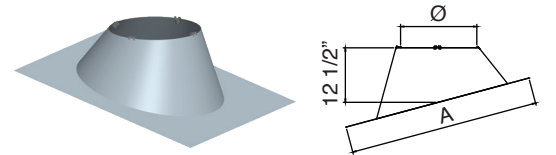
SS Flat Flashing

Ø	A	Product Code
3" to 6"	16"	SS_F
7"	18"	SS7F
8" to 9"	26"	SSØF
10"	28"	SS10F
12"	30"	SS12F
14"	31"	SS14F
16"	34"	SS16F
18"	36"	SS18F
20"	38"	SS20F
22"	40"	SS22F
24"	42"	SS24F



SS Adjustable Flashing

Ø	A	Height	Product Code
3" to 5"	30"	12-1/2"	SSØFA
6" to 7"	32"	12-1/2"	SS6FA
8"	34"	12-1/2"	SS8FA
9"	35-3/8"	12-1/2"	SS9FA
10"	36-1/2"	12-1/2"	SS10FA
12"	38-1/2"	12-1/2"	SS12FA
14"	41"	12-1/2"	SS14FA
16"	43"	12-1/2"	SS16FA
18"	45"	12-1/2"	SS18FA
20"	47-1/4"	12-1/2"	SS20FA
22"	49-1/2"	12-1/2"	SS22FA
24"	51-1/2"	12-1/2"	SS24FA



Adjustable from 5° to 30°.
Roof pitch 1/12" to 7/12".

SS Storm Collar

Ø	Effective Length	Product Code
3" to 24"	6-1/4"	SSØSC

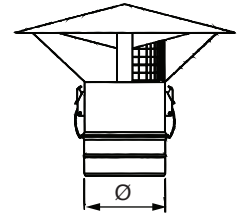
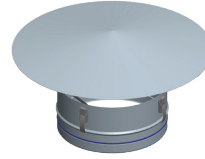


SS Venting Terminations

SS Rain Cap

Use to terminate above the roof line. Not recommended in cold climate as condensate can freeze on cap.

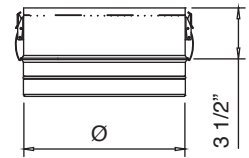
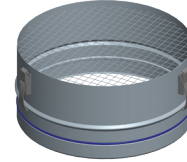
Ø	Product	Product Code with Bird	K Factor
3" to 24"	SSØRCU	SSØRCB	.50



SS Screened Termination

Use for horizontal through-the-wall terminations. Check installation instructions for restrictions on horizontal terminations, such as minimum distance from windows and doors.

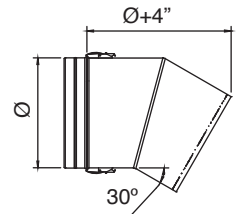
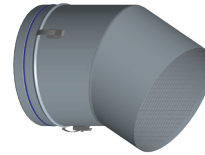
Ø	Product Code	K Factor
3" to 24"	SSØST	.14



SS 30° Screen Termination

Use for through-the-wall termination. Deters rain and other elements from entering the vent system. Check installation instructions for restrictions on horizontal terminations, such as minimum distance from windows and doors.

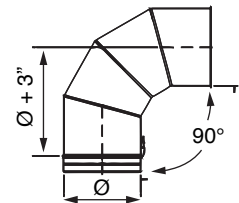
Ø	Product	K Factor
3" to 24"	SSØSTA	.70



SS 90° Screen Termination

Use for through-the-wall termination. Deters rain and other elements from entering the vent system. Check installation instructions for restrictions on horizontal terminations, such as minimum distance from windows and doors.

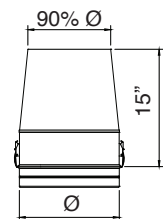
Ø	Product Code	K Factor
3" to 10"	SSØST90A	.50



SS Exit Cone

Use for vertical termination. Creates static back pressure to adjust harmonics. Venturi effect increases velocity of flue gases. Reduced opening provides for a smaller cross section to deter rain from entering the system.

Ø	Product	K Factor
3" to 24"	SSØEC	.60

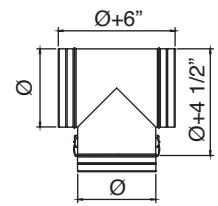
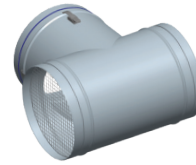


SS Venting Terminations

SS Termination Tee With Screen

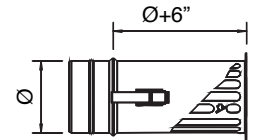
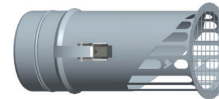
Use for standard and high-wind through-the-wall terminations. Check installation instructions for restrictions on horizontal terminations, such as minimum distance from windows and doors.

Ø	Product Code	K Factor
3" to 24"	SSØTT	.35



SS Mitter Cut

Ø	Product Code	K Factor
3" to 24"	SSØMC	.14

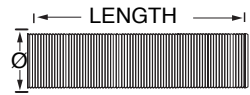


Secure Seal Flex

Secure Seal Flex

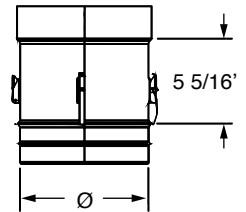
Use to vent Category II,III and IV gas burning appliances. Listed to UL 1738. Can only be used in vertical or near vertical runs.

Ø	Length	Product Code
3" to 8"	20'	SSØFLEX-20
3" to 8"	25'	SSØFLEX-25
3" to 8"	30'	SSØFLEX-30
3" to 8"	35'	SSØFLEX-35
3" to 8"	125'	SSØFLEX-125



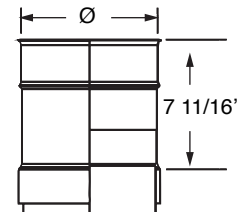
Adaptor SS to Flex

Ø	Length	Product Code
3" to 12"	5 3/8'	SSØAMF



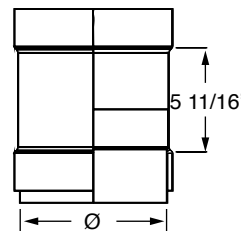
Adaptor SS Flex to SS

Ø	Length	Product Code
3" to 12"	7 3/4'	SSØAFF



Adaptor SS Flex to Flex

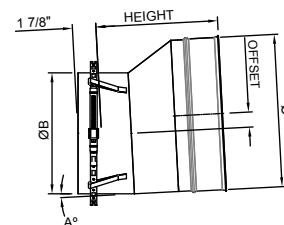
Ø	Length	Product Code
3" to 12"	5 3/4'	SSØAF



SS Venting Adapters

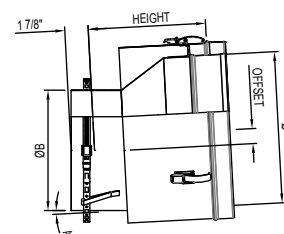
Fulton EDR 2000/3000, 4000 & 5000/6000 SS Adapter

Ø	ØB (O.D.)	Height	Offset	A	Product Code
8"	5 23/32"	9 7/16"	1 1/8"	0	SS5.7FEDR8U
8"	5 23/32"	9 7/16"	1 1/8"	0	SS5.7FEDR8B
12"	9 5/8"	9 11/16"	1 3/16"	3	SS12FEDRU
12"	9 5/8"	9 11/16"	1 3/16"	3	SS12FEDRB
14"	9 5/8"	9 11/16"	2 3/16"	3	SS14FEDRU
14"	9 5/8"	9 11/16"	2 3/16"	3	SS14FEDRB



Fulton EDR 2000/3000, 4000 & 5000/6000 SSD Adapter

Ø	ØB (O.D.)	Height	Offset	A	Product Code
8"	5 23/32"	9 3/16"	1 1/8"	0	SSD5.7FEDR8UK
8"	5 23/32"	9 3/16"	1 1/8"	0	SSD5.7FEDR8BK
12"	9 5/8"	9 7/16"	1 3/16"	3	SSD12FEDRUK
12"	9 5/8"	9 7/16"	1 3/16"	3	SSD12FEDRBK
14"	9 5/8"	9 7/16"	2 3/16"	3	SSD14FEDRUK
14"	9 5/8"	9 7/16"	2 3/16"	3	SSD14FEDRBK





BUILD FOR THE FUTURE

Customer Service and Support:

Airmate (USA).....	800.992.8368
Airmate (CAN).....	888.735.5475
Ameriflow.....	800.252.8467
Amerivent (Retail).....	800.252.8467
Amerivent (Wholesale).....	800.423.4270
Amerivent (Support).....	800.748.0392
AMPCO (USA).....	800.669.3269
AMPCO (CAN).....	888.735.5475
Duravent.....	800.835.4429
Hart & Cooley.....	800.433.6341
Hart & Cooley (Support).....	800.748.0392
Heatfab (USA).....	800.772.0739
Heatfab (CAN).....	800.848.2149
Lima.....	800.423.4270
Milcor.....	800.774.5240
Portals Plus.....	800.774.5240
RPS.....	800.624.8642
Security Chimney (USA).....	800.361.4909
Security Chimney (CAN).....	800.667.3387
Selkirk (USA).....	800.848.2149
Selkirk (CAN).....	888.735.5475
Selkirk (Support).....	800.748.0392

Manufacturing & Distribution Centers:

CANADA	
Nobel, ON	Manufacturing
Laval, QC	Manufacturing
Prescott, ON	Distribution
USA	
Grand Rapids, MI	Center of Excellence
Dallas, TX	Distribution
Englewood, OH	Distribution
Huntsville, AL	Manufacturing & Distribution
Mira Loma, CA	Distribution
Nampa, ID	Manufacturing & Distribution
Turner Falls, MA	Manufacturing & Distribution
Vacaville, CA	Manufacturing
MEXICO	
Ojinaga, MX	Manufacturing
Mexicali, MX	Manufacturing

Corporate Headquarters:

Duravent Group
 28 W. Adams, Suite 1810
 Detroit, MI 48226
 Tel: 800.835.4429
 Email: info@duraventgroup.com
www.duraventgroup.com



duravent[™]
GROUP

BUILD FOR THE FUTURE

www.duraventgroup.com

