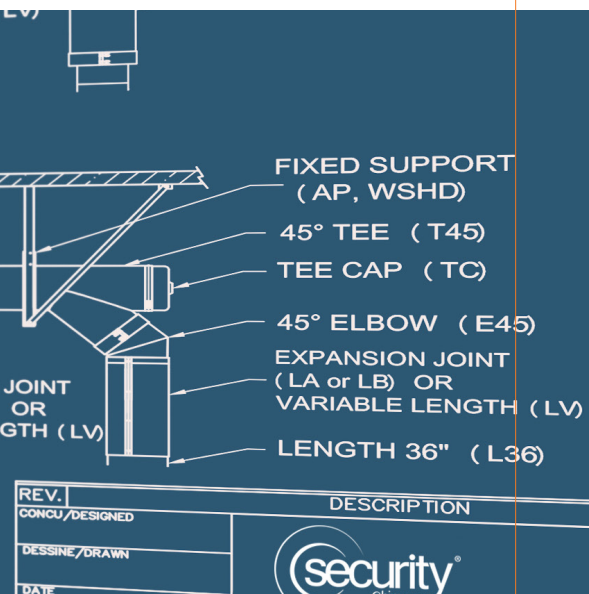


# WHAT CONTRACTORS NEED TO KNOW: KITCHEN EXHAUST DUCT

## WHY SECURITY CHIMNEY PREFAB GREASE DUCT?

It's better for your supplier provide you 5% of what you really want then 1000% of something you don't. Security Chimneys's Prefab Grease Duct provides benefits that make contractors more profitable. These benefits lower costs, reduce risks and save time. They also provide contractors with more to sell to their clients while reducing conflicts with AHJ's, Code officials and engineers.



## WHY SECURITY CHIMNEY PREFAB GREASE DUCT: GREATER PROFITABILITY

- Lower Installation Costs
- Save Time
- Reduce Risks and Headaches
- Design, Application and Training Support

## WHAT ARE THE BENEFITS: WHAT IF...

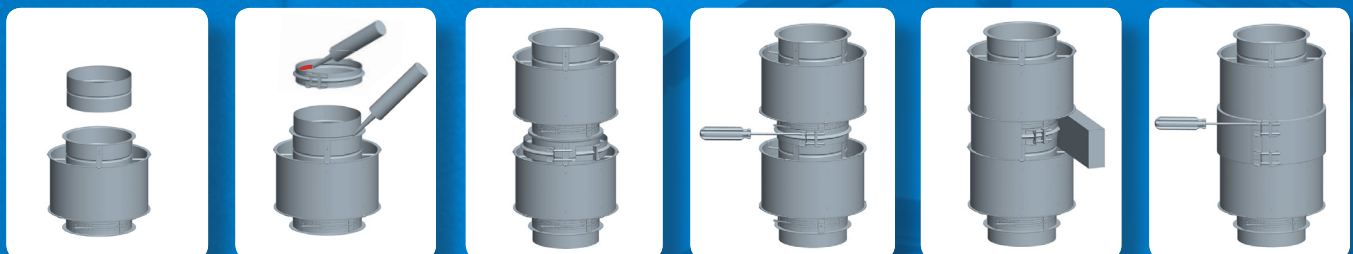
- **What if you could lower installation costs and reduce jobsite quality issues...**  
Finding good employees will not get easier. A prefab, Plug-N-Play solution, ensures you save time on the jobsite and reduce costs using less skilled, less expensive and more available manpower.
- **What if you could keep the job on schedule without delays and conflicts...** The Security Chimney prefab solution is your zero-leak option. Zero leaks and code compliant design support means your job goes smoothly, passes inspection without delays and conflicts and keeps the overall project on-schedule.
- **What if you could rely on someone else for Kitchen Exhaust Application and Design support and not have them on your payroll...** The industries best team, Security Chimney DSG, supports your needs at No Charge.



## ALIGNMENT SLEEVE: Labor savings, quality control, and durable

Guides pieces together & provides backing for sealant

- Stiffens large/heavy sections keeping flanges in perfect alignment for ease of V-band attachment
- Smaller diameter can be joined by one person (vs. two)
- Eliminates sealant from being accidentally wiped off flanges



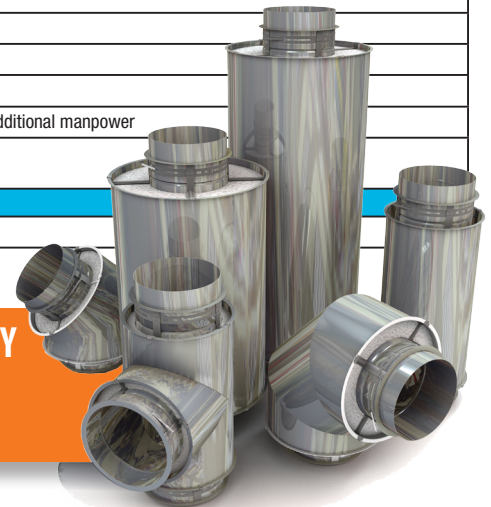
# WHAT CONTRACTORS NEED TO KNOW: SECURITY CHIMNEY PREFAB GREASE DUCT



Lower Costs AND Save Time. Reduce Risks, Headaches and Conflicts!

## BENEFITS TO INSTALLING CONTRACTOR WHEN USING SECURITY CHIMNEY vs SITE-BUILT

	Dollar Savings & Times Savings	Quality/Reliability / Durability	Notes:
<b>REDUCE RISKS &amp; HEADACHES TO PROJECT SCHEDULE</b>			
Code Compliance & Reduced Project schedule	<b>YES</b>		Code Compliant Factory Generated Design & Materials
No Leaks, No Inspection failures	<b>YES</b>	<b>YES</b>	No inspection leak failures... install and forget it
Outer Wall vs. Insulation	<b>YES</b>	<b>YES</b>	Reduced Inspections & AHJ involvement
Ease of install	<b>YES</b>	<b>YES</b>	Keeps project on Schedule
<b>SUPPORT - INDUSTRIES BEST &amp; QUICKEST TURNAROUND - NO CHARGE</b>			
Design - BOM & Drawings	<b>YES</b>	<b>YES</b>	East Coast & West Coast Coverage
Option: On-Line Design Tool	<b>YES</b>	<b>YES</b>	Training Provided or use our team.
Application Support	<b>YES</b>	<b>YES</b>	Value Engineering - Meet project needs at lowest cost.
Code familiarity	<b>YES</b>	<b>YES</b>	We know codes... and they are always changing.
Installation Support	<b>YES</b>	<b>YES</b>	Code Compliant Design & Materials. No jobsite "shortcuts"
<b>SUPERIOR MATERIALS</b>			
Outer wall aesthetics		<b>YES</b>	Outer wall aesthetics superior to fire wrap insulation... even before the insulation rips
Broad product line	<b>YES</b>		Voice of Customer driven options. Adjustable lengths, transitions, adapters, square to round to connect to rectangle duct.
<b>LOWER INSTALL COSTS - SIMPLICITY, TIME &amp; EXPENSE SAVINGS</b>			
Lower Skilled Labor - no welders	<b>YES</b>	<b>YES</b>	No expensive & hard to find welders.
Centering "Alignment" Sleeve	<b>YES</b>	<b>YES</b>	Awesome innovation - Voice of Customer, one person operation
V-Band Flange	<b>YES</b>	<b>YES</b>	Ease of install
Access Door Gasket Factory Applied	<b>YES</b>	<b>YES</b>	Another savings ... one less step for the installer
More Space Between Outers	<b>YES</b>	<b>YES</b>	Voice of Customer innovation - space for real world contractor h&s
Quicker install - "Plug-N-Play"	<b>YES</b>	<b>YES</b>	Less time on jobsite. After hours installation for rehab projects. No need to shut down
No Welding	<b>YES</b>	<b>YES</b>	No site welding & additional safety requirements
No insulation exposed	<b>YES</b>	<b>YES</b>	No damage to insulation during installation or maintenance
Reduced Inspections	<b>YES</b>		No Fire Wrap inspections required
Captured Nut & Bolt	<b>YES</b>	<b>YES</b>	Voice of Customer innovation
Specialised parts	<b>YES</b>	<b>YES</b>	Makes installation easier
Less Slope Requirement	<b>YES</b>		CODE DRIVEN SPACE SAVINGS
No "fire monitoring" on jobsite	<b>YES</b>		Site-welded duct requires fire prevention, active monitoring & additional manpower
Smaller footprint - No Fire rated Chase required	<b>YES</b>		No fire rated chase saves space and cost
<b>WARRANTY</b>			
Limited Lifetime			Vs. Site-built warranty of 1-year or less



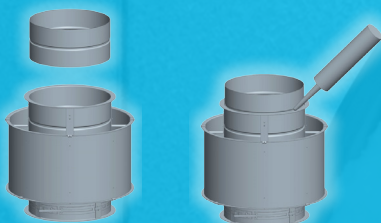
## WHY SECURITY CHIMNEY PREFAB GREASE DUCT: GREATER PROFITABILITY

- Lower Installation Costs
- Reduce Risks and Headaches
- Save Time
- Design, Application and Training Support



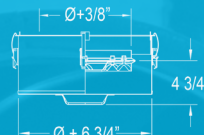
### CENTERING SLEEVE: DURABILITY

Protects sealant from degradation & loss during cleaning.



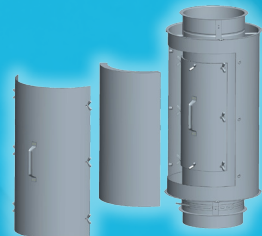
### NO TOOL ACCESS TEE CAP

Labor savings during maintenance. Easy and toolless inspection.



### NO TOOL ACCESS DOOR

Labor savings during install, maintenance and inspection.



For additional information or questions, contact [jdahlheimer@duravent.com](mailto:jdahlheimer@duravent.com) or 330-510-0052

(3/2018) OGDCIX